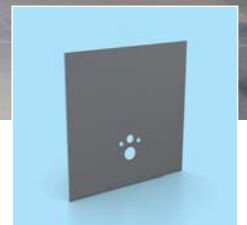
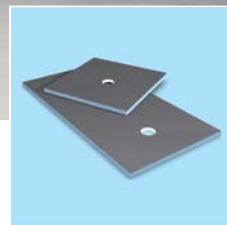
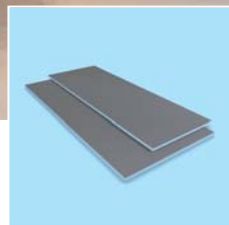
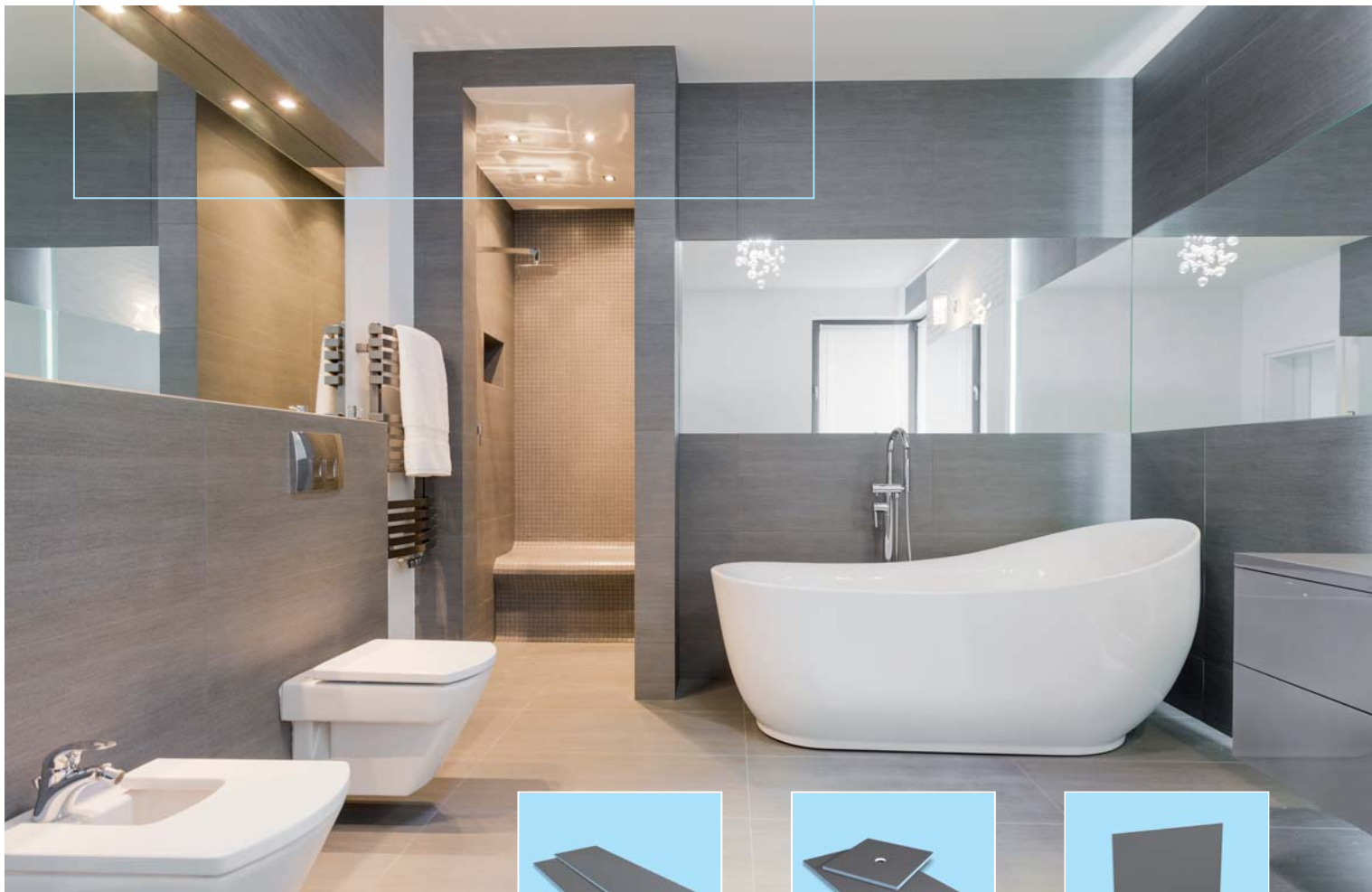
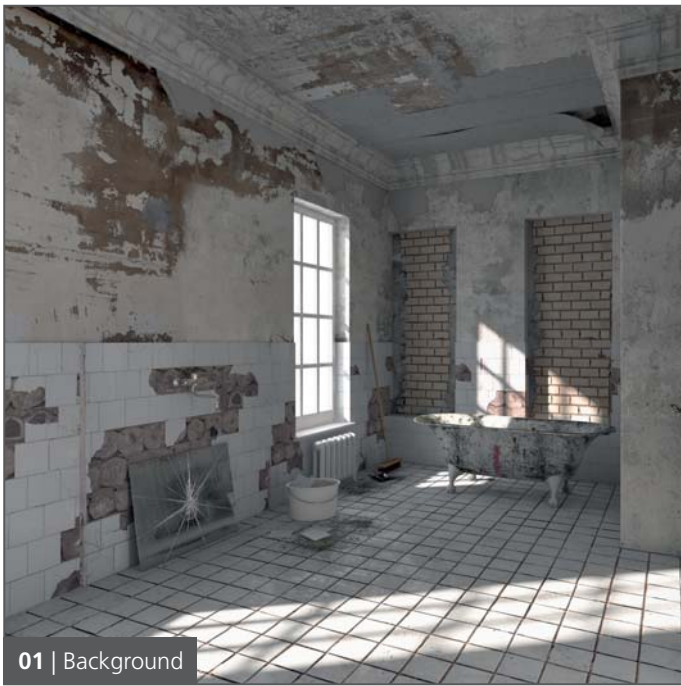


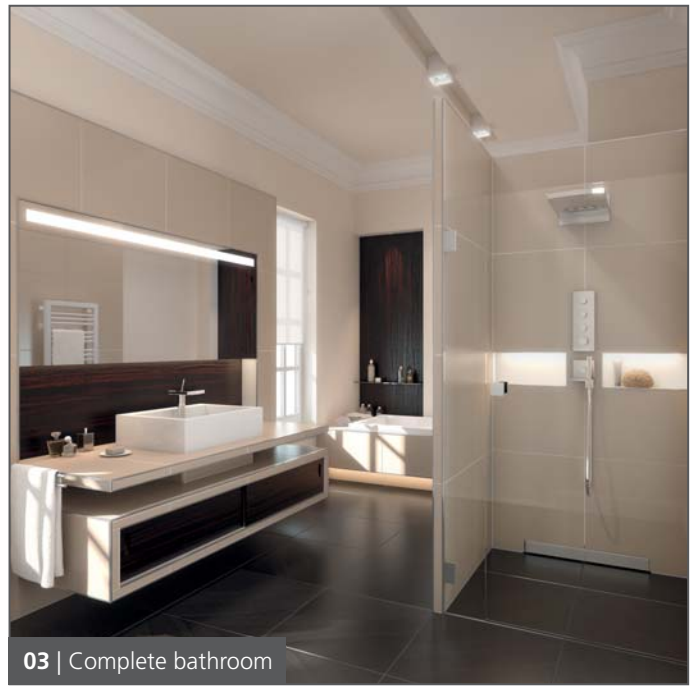
wedi Overview

From individual products to complete systems





01 | Background



03 | Complete bathroom



02 | Implementation in the wedi system

Building, renovating and designing with the wedi system

Superior guaranteed safety with unrivalled ease of use

The premium brand wedi stands for high-quality and, above all, practical solutions which provide real added value to each and every customer. Whether it be a shower, complete bathroom or wellness area. The modular wedi system opens up a multitude of possibilities so that each steam room can be individually designed. With an extensive, perfectly matched and combinable range of building boards and prefabricated elements – floor-level showers and partition wall systems, seating elements and bathroom furniture, as well as suitable assembly and sealing accessories.

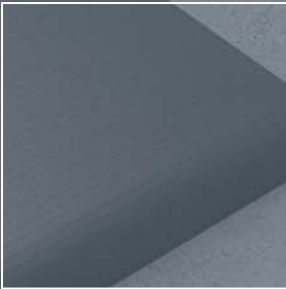
Thanks to the modular building system and its unlimited compatibility, wedi system solutions are particularly easy and quick to put together and can be tiled directly without having to wait. For the complete bathroom from one place - 100 % water-tight and secure in the long-term. Signed and sealed guarantee from the manufacturer. The range of services is complemented by the numerous services offered by wedi: expert advice from sales representatives, personalised service from the individual departments and technical support from the application technology department.

- Building boards from page 8
- Floor-level showers from page 18
- Design and wellness elements from page 34
- System connectors from page 46
- System examples from page 58



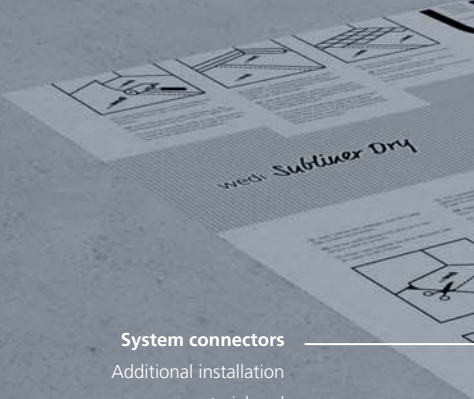
Building boards

Waterproof building board solutions for free design of wet rooms of all types.



Design and wellness elements

Selected range of prefabricated elements such as heated benches and loungers, as well as individually designed custom-made products according to the customer's specifications.



System connectors

Additional installation material and high-performance sealing solutions, can be installed particularly quickly and easily.



Floor-level showers

Large range of floor-level showers for every background and every space in the bathroom, from point and linear drainage through to complete systems with integrated drain technology.



Wedi Subliner Dry

We only use the best materials for the best systems



Waterproof



Stable



Heat insulating



Tested & approved system



Low-emission



The CE labelling of the wedi products documents their tested and approved use as a sealing system for wet rooms.



Systems from wedi are labelled with the French VOC classification. A+ stands for exceptionally low emission, non-hazardous product systems.



The wedi product systems satisfy the construction guidelines and regulations that are valid in England, Wales, Northern Ireland and Scotland.



The modular system solutions from wedi have a wide range of differing technical building approvals and test certificates.



TÜV Rheinland confirms and certifies the excellent wedi quality management system in accordance with DIN ISO 9001:2015.



The barrier-free wedi products have been tested, assessed and certified for their conformity by the DIN CERTCO organisation for conformity assessments.



The wedi product systems have been technically tested and labelled in France by the CSTB (Centre scientifique et technique du bâtiment).



When manufacturing its products, wedi uses certified green electricity from renewable energies.



The wedi construction systems are labelled with the leading Finnish emissions classification. In this context, M1 stands for the highest quality.



The Norwegian test seal, which corresponds to the European requirements, certifies the high technical quality of the wedi product systems.



The wedi quality management and the high product quality are labelled with the Finnish VTT test seal.

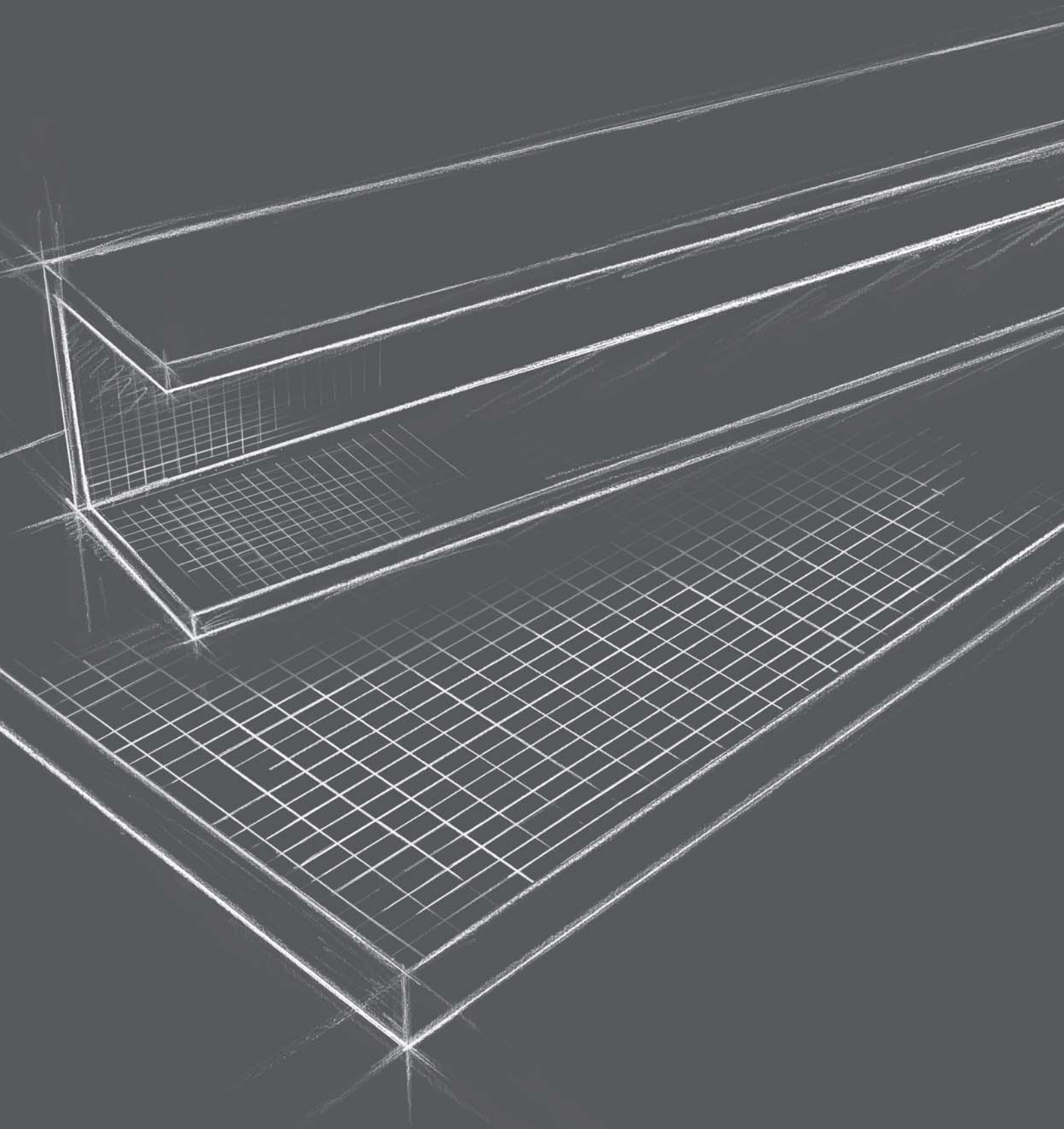


The MK test seal qualifies wedi products for use in Denmark in accordance with the country-specific guidelines, norms and standards.

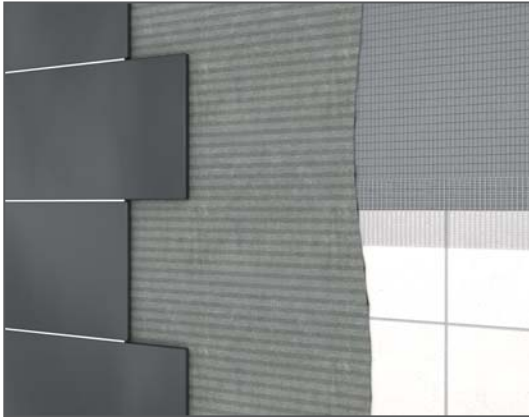
wedi building boards: Indispensable under the tiles

With the water-tight wedi building board solutions, any type of steam room can be designed according to what you want and renovated in a short space of time. The basic material, wedi building boards, is available in many formats and designs, including; in small or large sizes for application to floors and walls, in a flexible variation for individual structures and in the form of prefabricated elements, e.g. for storage solutions, to clad pipe connections and WC front wall installations.

All varieties build the perfect base for the most varied tile finishes, combining their light-weight with high stability, and are part of the tested modular wedi systems. The right solution for all your needs.

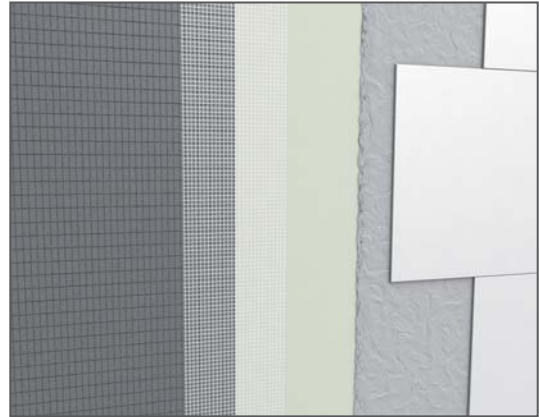


Broad range of applications



Height compensation

All types of levelling for bathroom refurbishment or renovation with the 4 and 6 mm wedi building boards.



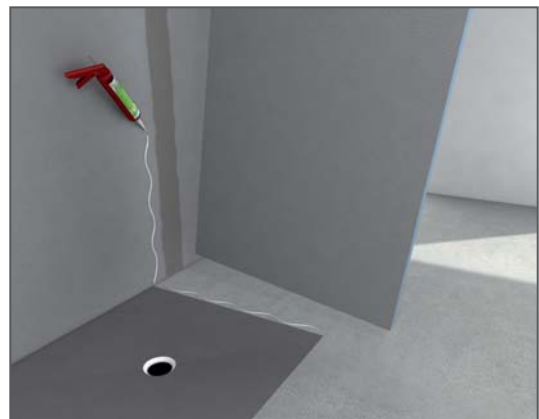
Transitions to plasterboard

Transitions from dry areas to spray and wet areas with the 12.5 mm wedi building board.



Uneven surfaces

Cladding for extremely uneven and non-load bearing surfaces with the 20 mm wedi building board.



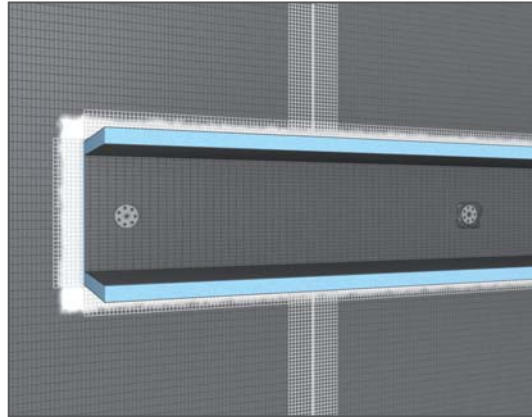
Partition walls & wall structures

Construction of stable partition walls and wall structures on studding with the wedi building boards from 20 mm.



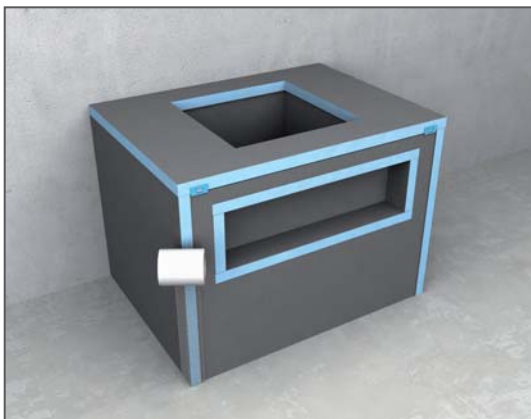
WC dry wall installations

Cladding of WC dry wall installations with the customisable wedi I-board installation element.



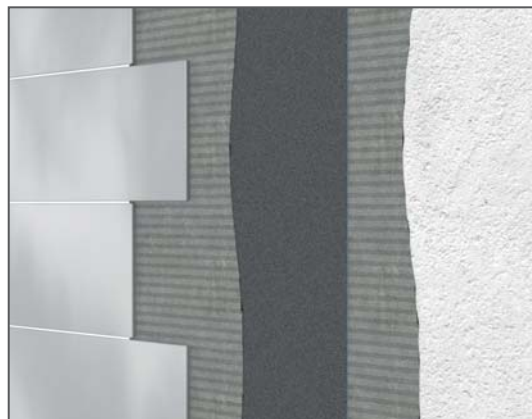
Shelves, niches & cladding

Creation of shelf and niche solutions and cladding with the robust wedi prefabricated elements.



Individual structures

Creation of tailor-made bathroom furniture and structures with 30, 40, 50, 60 and 80 mm thick wedi building boards.



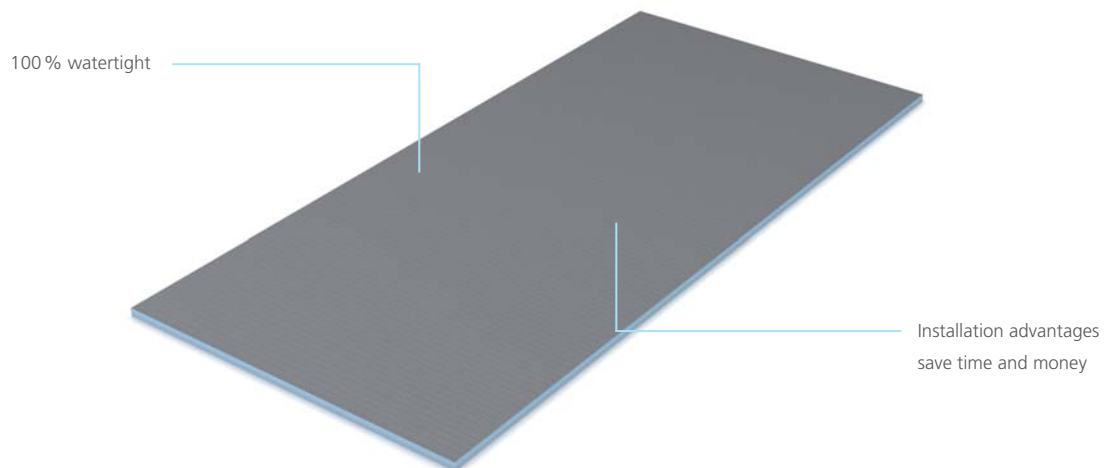
Vapour barriers

Excellent damp and moisture protection with the wedi Vapor building board, e.g. in indoor swimming pools and steam baths.



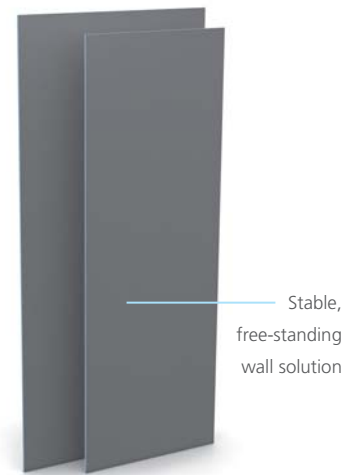
wedi building board

wedi building boards form the basis for all system solutions. They are 100 % waterproof, extremely robust and available in numerous designs. They can be cut to the desired sizes and shapes without any loss of function or forfeiture of the guarantee and offer thermal insulation and waterproofing in one in the process. Their versatility is unique. Whether it's complete bathrooms, individual washbasins or customised individual items – the wedi building boards make anything possible.



wedi building board XL and XXL

The large-size wedi building boards are particularly remarkable thanks to their extraordinary widths of up to 1.20 m. As a result, they are not only ideal for use as free-standing walls, they also reduce the number of joint transitions and simplify installation enormously. The XL and XXL building boards combine all of the benefits of the classic wedi building boards and are also particularly lightweight and easy to handle despite their size.



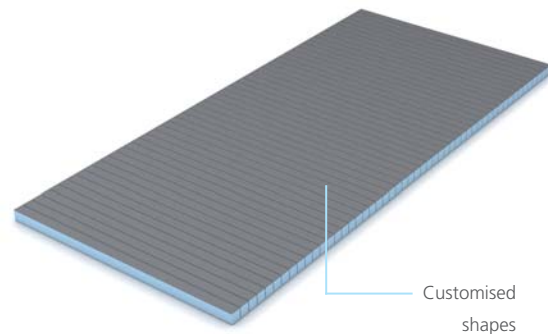
wedi Vapor

The wedi Vapor building board is in demand in the very places where a vapour barrier is needed for structural reasons when installing internal thermal insulation. This applies in particular for the internal use of swimming pool walls, steam baths and communal shower facilities.



wedi Construct

The wedi Construct building board offers countless possibilities in the design of individual shapes. Regardless of whether it is narrow radii or semi-circular solutions, thanks to its factory-cut longitudinal and traverse sections, the Construct building board gives free rein to every idea.





Quick and easy
to install

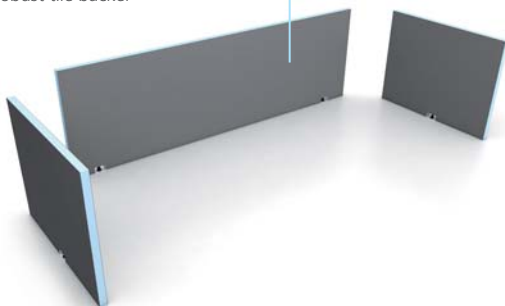
wedi I-Board

wedi I-Board is a complete prefabricated installation set for the cladding of WC dry wall installations. With a width of 120 cm, this board can be adapted quickly and easily to suit virtually all specific needs. Despite its light weight, it is extremely strong and stable.

wedi Bathboard

The prefabricated wedi Bathboard bath cladding is 20 mm thick and is suitable for almost every bath format. Thanks to the height-adjustable feet, uneven areas of up to 10 cm can be safely levelled in bare concrete or screed during installation.

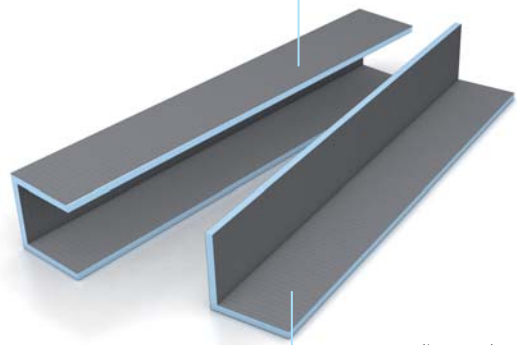
Robust tile backer



wedi Mensolo-L / -U

The practical Mensolo prefabricated elements in L and U shapes are extremely versatile, for example as a shelf solution or pipe cladding. Subsequent surface design can be done either with tiles, with plaster or with paint.

wedi Mensolo-U



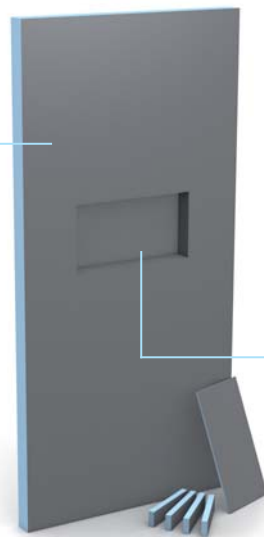
wedi Mensolo-L



wedi Sanwell wall element

The sturdy wall element with integrated niche is ideal for use as a shower partition wall, can be installed particularly easily and can then be directly tiled. Here, both the overall size and the niche size in the wedi Sanwell wall element can be individually customised.

Ideal for creating a shower partition

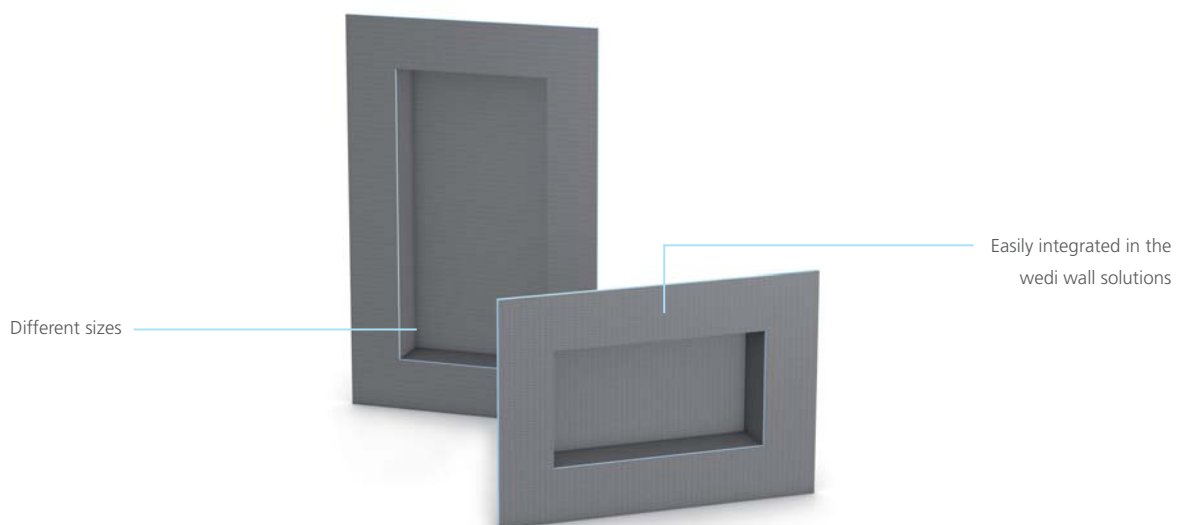


with integrated, customizable niche



wedi Sanwell niches

The wedi Sanwell niches create additional shelf spaces in the shower and bathroom. They offer space for a multitude of shower products or individual decorating ideas. Furthermore, they are available in a variety of formats and are compatible with the standard wedi system solutions.

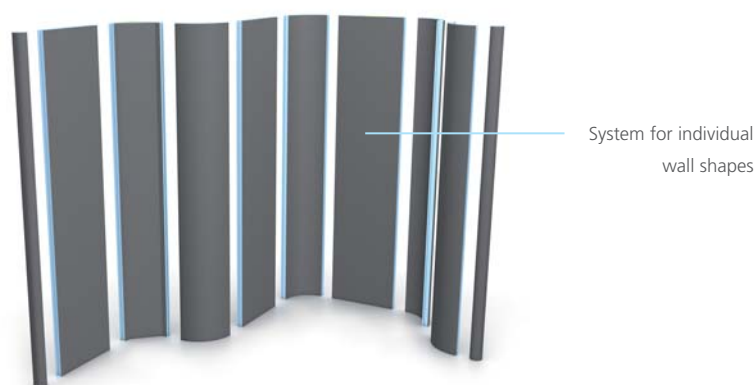


Different sizes

Easily integrated in the
wedi wall solutions

wedi Moltoromo

With the modular wedi Moltoromo partition wall system, versatile wall configurations can be created effectively for different bath and wellness applications. Round, curved or angular wall structures can be installed quickly and easily. The surfaces can then be designed with tiles or plaster.



wedi Shower-Kit

The wedi Shower-Kit is a complete set for creating a floor-level corner shower. Handily packaged in just a single box, it contains all of the materials which are required for a watertight corner shower: a reliable floor construction consisting of a wedi floor element and the corresponding system drain, a watertight wall solution in the form of the wedi building board and the appropriate sealing and installation accessories.

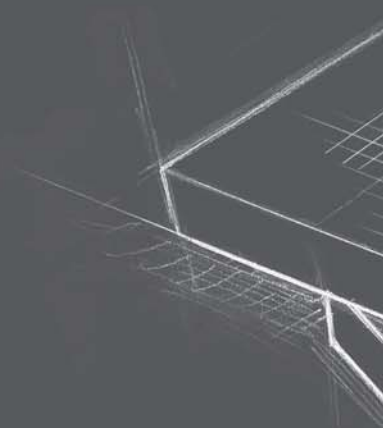
The whole system
in a box

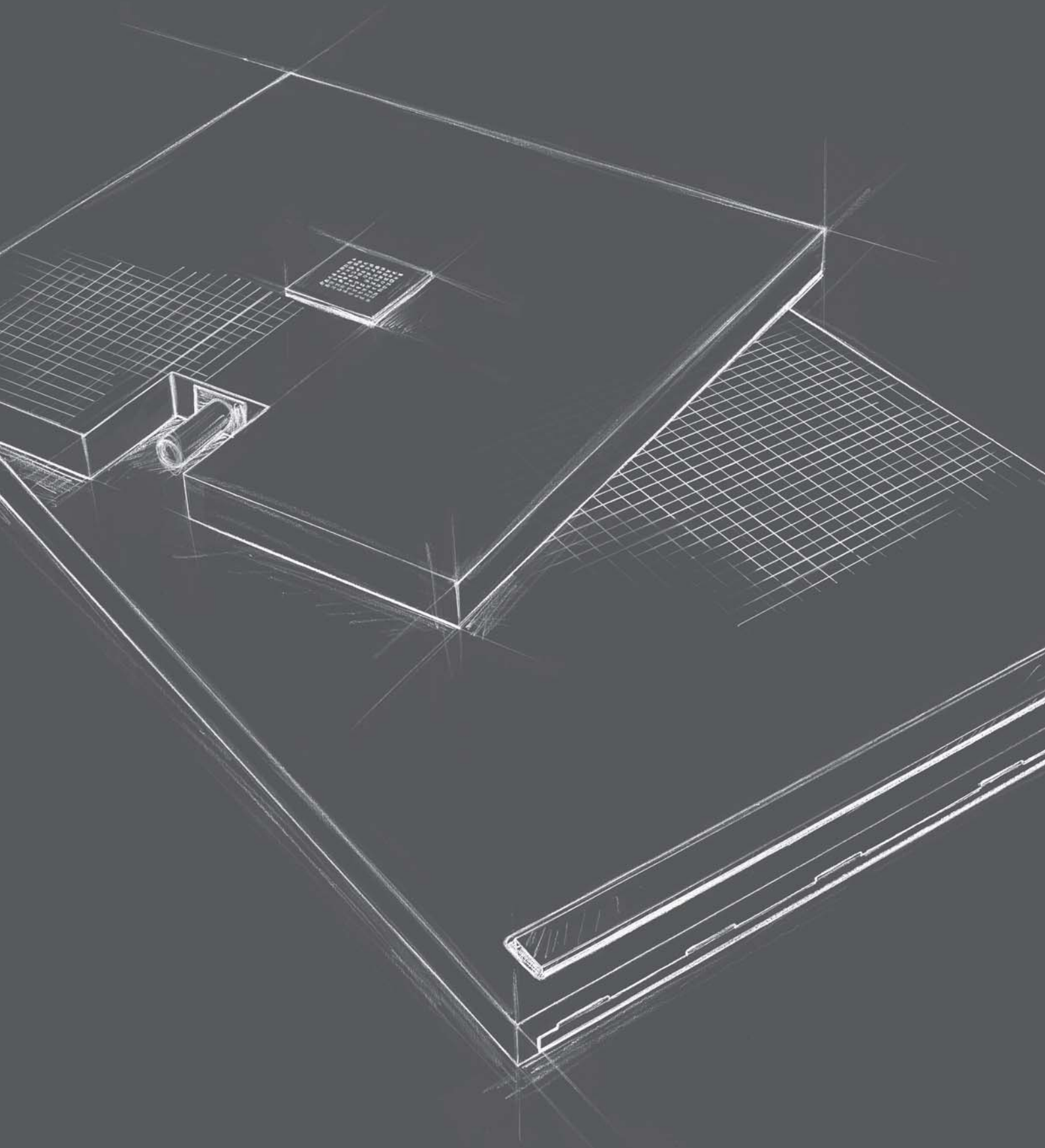


wedi Fundo: Solid foundations, for well-founded reasons

The wedi Fundo series provides an enormous range of floor-level showers for every starting position and every space in the bathroom.

Whether it be classic point drainage, stylish line drainage or a complete system with integrated drain technology - each floor element is easy, secure and quick to put together, adaptable to the desired size, equipped with a factory-made prefabricated slope and 100 % water-tight in the entire wedi system.





Classic system

Floor-level shower as an individual element

The classic system consists of a Fundo ground element with point or linear drainage as well as the corresponding drain pot which is available separately in different versions. Within the scope of the delivery, the processes for point drainage includes a standard grate, further design grates can be ordered optionally. The linear drainage channel covers are not part of the scope of delivery and must be purchased in addition. The Fundo ground element sealing occurs on the bordering surfaces with the Fundo sealing set, consisting of wedi 520, wedi tools sealing tape and wedi tools sealing corners.

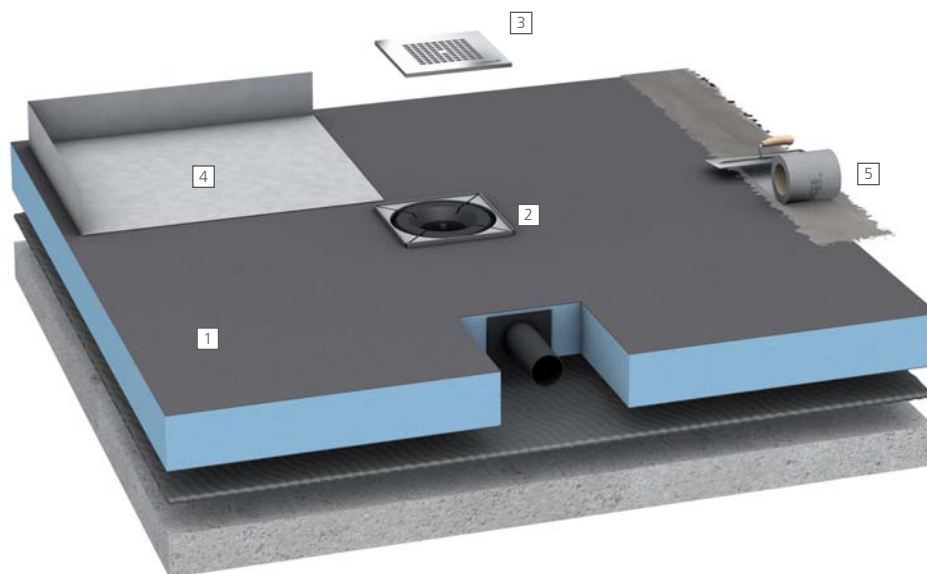


-
- 1 **Floor element** ▪ e.g. Fundo Primo with classic point drainage
 - 2 **Drain pot** ▪ e.g. the Fundo drain DN 50, horizontal
 - 3 **Drain grate** ▪ e.g. the standard grate, which is included in the scope of delivery of the Fundo drain
 - 4 **Seal** ▪ e.g. with the wedi Fundo sealing set, consisting of wedi 520, wedi tools sealing tape and wedi tools sealing corners

Complete system

Floor-level shower with integrated drain technology

The complete system with point or linear drainage has a factory integrated system drain in the ground element. The suitable drain covers as well as the means to cover them are already included in the scope of delivery for the complete system. The complete system sealing occurs on the bordering surfaces with the Fundo sealing set, consisting of wedi 520, wedi tools sealing tape and wedi tools sealing corners.

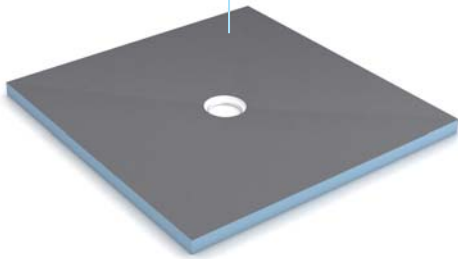


-
- 1 **Floor element** ▪ e.g. Fundo Plano, complete system with integrated drainage
 - 2 **Drainage system** ▪ the drainage is factory integrated into the Fundo Plano ground element
 - 3 **Drain grate** ▪ the grate is included with delivery of the Fundo Plano
 - 4 **Sealing pads** ▪ especially for sealing the Fundo Plano pipe connection, included in the complete system
 - 5 **Seal** ▪ e.g. with the wedi Fundo sealing set, consisting of wedi 520, wedi tools sealing tape and wedi tools sealing corners

Fundo Primo

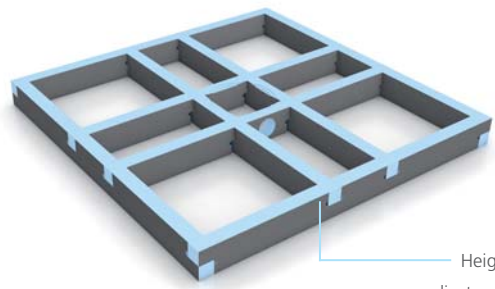
For classic point drainage in the shower, Fundo Primo offers floor elements in a huge range of sizes. Whether square or rectangular, positioned in the centre of the room or in the corner, they offer the ideal solution for any space.

Exactly uniform
predefined
gradient



Fundo Primo Easy Set

With the Fundo Primo Easy Set, floor-level showers from the wedi Fundo range are quickly and easily brought to a suitable height. No laborious mortar and screed work is necessary. The overall installation height of the Fundo Primo Easy Set plus the Fundo element is 14 cm.



Height
adjustment
made easy





Classic system

Complete system

Fundo accessories

Prefabricated elements

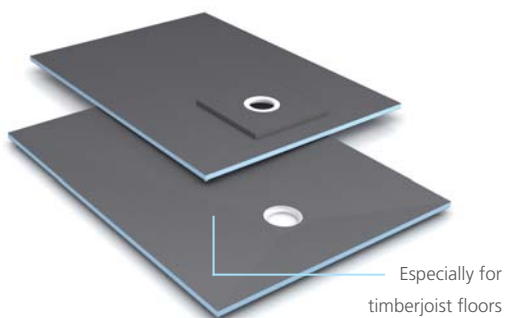
Custom builds

System connectors

System examples

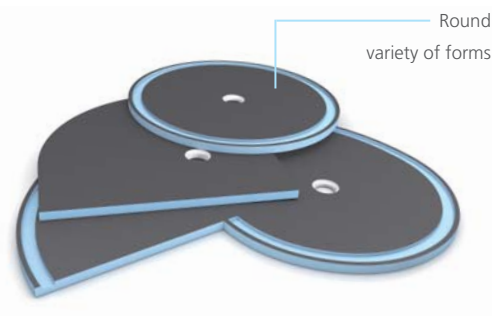
Fundo Ligno

The flush-to-floor shower element, which is just 20 mm thick on the outer edge, has been developed especially for use in old and new buildings with timber joist floors. In comparison to conventional shower elements, the Fundo Ligno is adapted to the wooden layer of the floor, meaning it can be integrated wonderfully into this – without creating further height and without any laborious levelling measures.



Fundo Borgo, Trollo and Nautilo

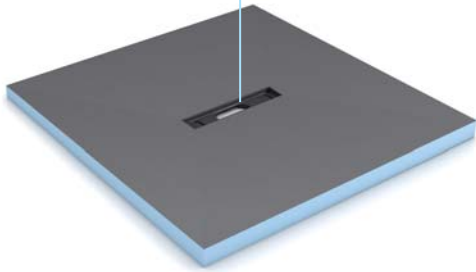
The Trollo, Borgo and Nautilo Fundo shower elements unite creative linear guidance with natural shapes and can also be combined with matching wall elements.



Fundo Riofino

The floor-level Fundo Riofino shower elements have a narrow channel drain which allows the shower water to run off down the middle. The slope required for this is already built into the floor element.

Central linear
drainage



Fundo Riolito

Fundo Riolito floor elements have a drainage channel positioned at the side and are completed by a height adjustable channel cover made from stainless steel. Here too, the precise slope required is already prefabricated in the factory.

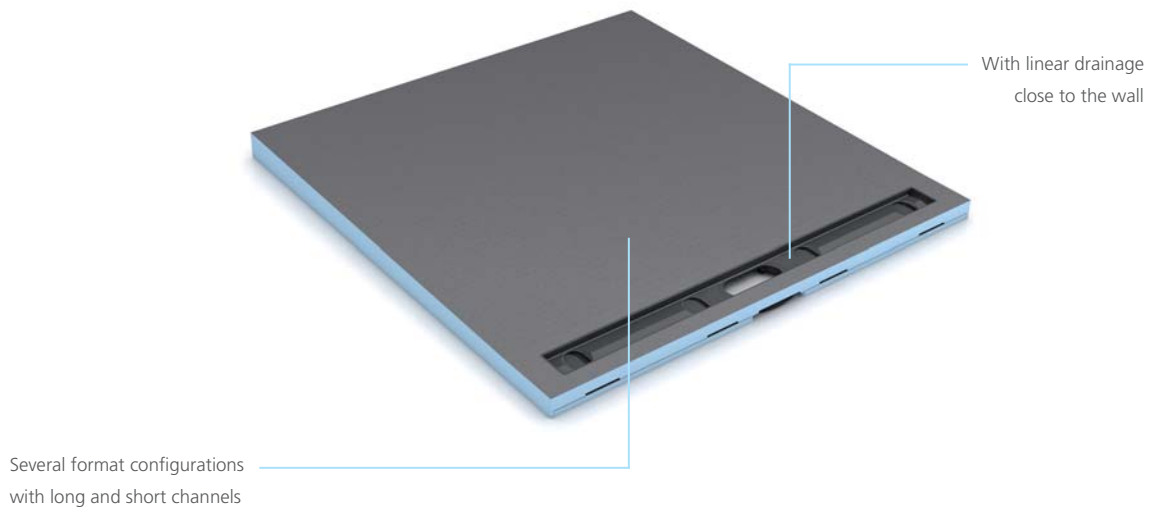
Linear drainage
at the side





Fundo Riolito neo

Fundo Riolito neo is a flush-to-floor shower element with a channel drain close to the wall which allows the shower water to run off in a slender line. The gradient required for this in each case is already incorporated into the floor elements and enables an almost jointless installation of large format tiles of differing thickness (5 – 25 mm).





Fundo Integro

The new Fundo Integro is the slimmest flush-to-floor shower element with integrated drain technology from wedi. Like all the other Fundo floor elements it is already sealed ready for installation; with a drain capacity of 0.8 litres per second, 50 mm water trap height, at least 1.5 % even preformed gradient and 100 % waterproof material, the new shower element not only fulfils all relevant standards but offers an overall installation height of just 90 mm. The Fundo Integro sets entirely new standards as a complete system – simply the perfect solution for all renovation projects, as well as a reliable and time-saving alternative for every installation.

Maximum reliability thanks to integrated drain technology

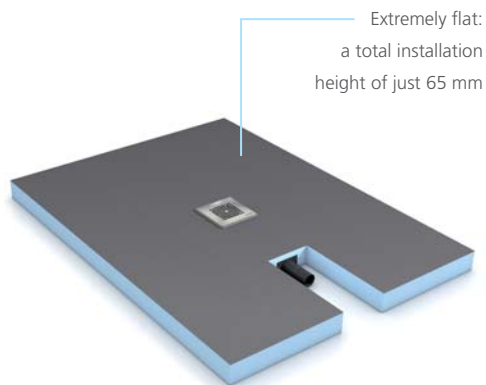


Complies with all current standards and guidelines



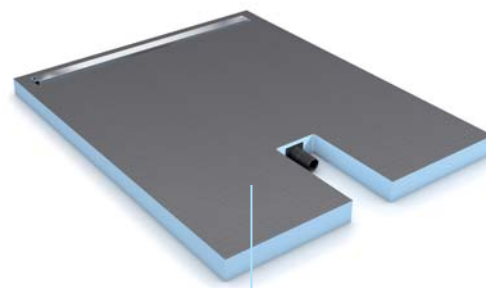
Fundo Plano

Thanks to the prefabricated drain, the entire Fundo Plano system is a mere 65 mm. It is therefore perfect for renovations, e.g. even in old buildings where every millimetre counts.



Fundo Plano Linea

Fundo Plano Linea is the flat complete system for floor-level showers with linear drainage with a total installation height of just 70 mm incl. prefabricated drain technology. The linear drainage is positioned very close to the wall and is available with either a short or a long channel.



Extremely flat:
a total installation
height of just 70 mm



Fundo Top

Fundo Top is the visible surface for Fundo floor elements and a high-quality alternative to traditional tiling. The one-piece, seamless element consists of a 6 mm thick high strength mineral material with an elegant look and a very pleasant feel. The various Fundo Tops are the perfect complement to the Fundo Primo, Riolito neo and Plano floor elements. They are available in a variety of designs and fit perfectly into any bathroom design in their four shades – white, beige, anthracite and grey.



Fundo Top Primo

Whether large or small, square or rectangular – Fundo Top is the perfect surface for Fundo Primo with classic point drainage, available in a wide variety of shapes and sizes.



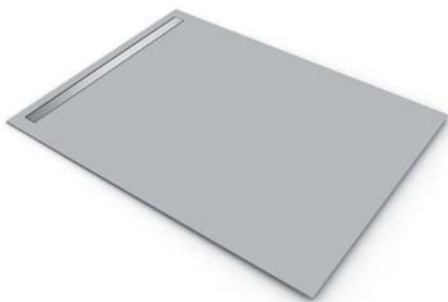
Fundo Top Plano

Fundo Plano and Fundo Top – an unbeatable combination! Because here the slimmest wedi complete system, with a total installation height of just 65 mm, meets the most beautiful wedi surface, available in four colours.



Fundo Top Riolito neo

Combined with the high-quality Fundo Top surface, the Fundo Riolito neo floor element with close-to-wall linear drainage fits seamlessly into any room concept in terms of design and colour.



Fundo Top accessories

To match the Fundo Top surfaces, the channel covers are available with the matching colour inlay for Fundo Top Riolito neo and skirting for all designs.



Fundo drains point drainage

Thanks to the low construction height and the 100% waterproofing in the system, the Fundo drains are best suited for new builds and renovation work. You can choose from different variants for vertical and horizontal designs. A suitable standard drain cover is included in the delivery.



Fundo drains linear drainage

The horizontal and vertical designs of the Fundo channel drains can be implemented for all floor elements with linear drainage. Whether new build or renovation, the drains are a must due to their low structural height, 100% waterproofing and the fact that they can be turned 360°. The corresponding channel cover must be selected to fit with the floor element and is therefore not included in the Fundo channel drains delivery.



Fundo Riolito slope profiles

The tapering slope profiles, made from stainless steel, for the Fundo Riolito floor element allow for an aesthetic transition from the slope of the floor element to the even floor covering or to the adjoining wall.



Fundo Riolito neo/Plano Linea slope- and end profiles

Specially developed for the Fundo Riolito neo and Fundo Plano Linea floor elements, the decorative slope and tile profiles which can be individually shortened create an optically high-quality floor and wall connection.



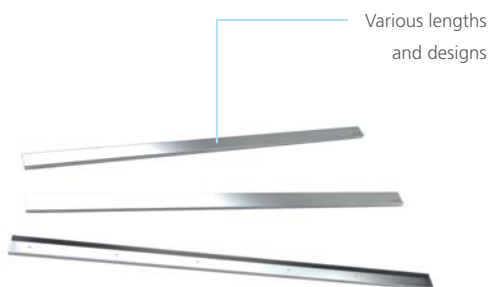
Fundo Fino drain covers

The Fundo Fino series offers more designs, as alternatives to the supplied drain cover. Whether made from simple or brushed stainless steel, round or square or as a screw-fastened variant – thanks to our large selection, we have a suitable drain cover to suit everyone's tastes and purposes.



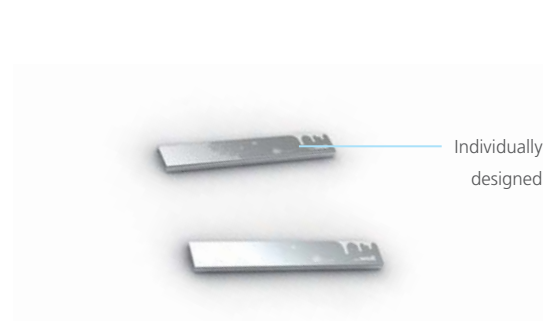
Fundo channel covers

The high-quality and aesthetic channel covers for the wedi floor elements with linear drainage are available in standard, exclusive or tile-able designs.



Fundo Persono channel covers

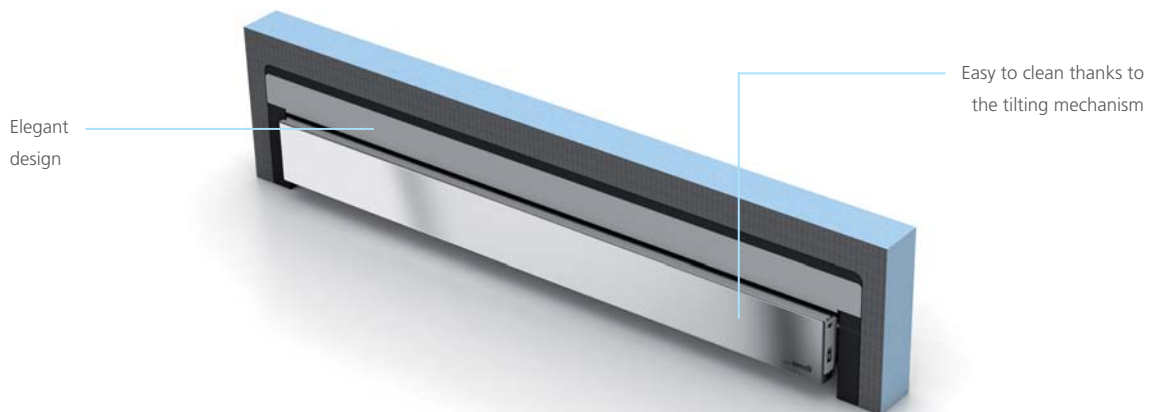
Fundo Persono is the high-quality finish of the wedi stainless steel channel covers with an individual motif of your choice. Whether logo, script or graphic, partial or full-surface – everything is possible.





Fundo Discreto

The Fundo Discreto attachment element optically creates a flow of water from the floor into the wall. It was specially developed for the Fundo Riolito neo, Riolito and Plano Linea floor elements and makes the previously visible channel disappear. In combination with other wedi system components, the attractive wall drain can be individually enhanced, e.g. with seating, a storage area or a full wall panel.



Elegant design

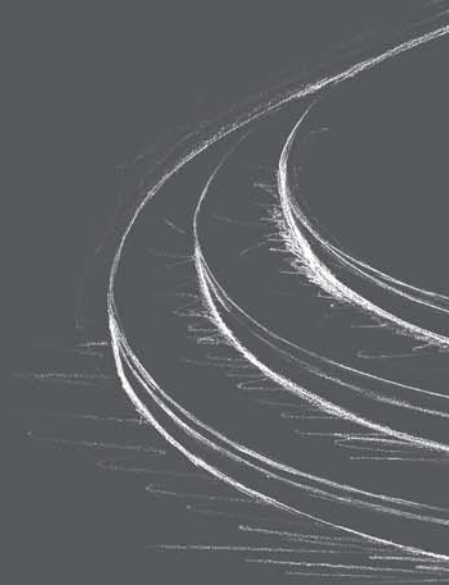
Easy to clean thanks to the tilting mechanism

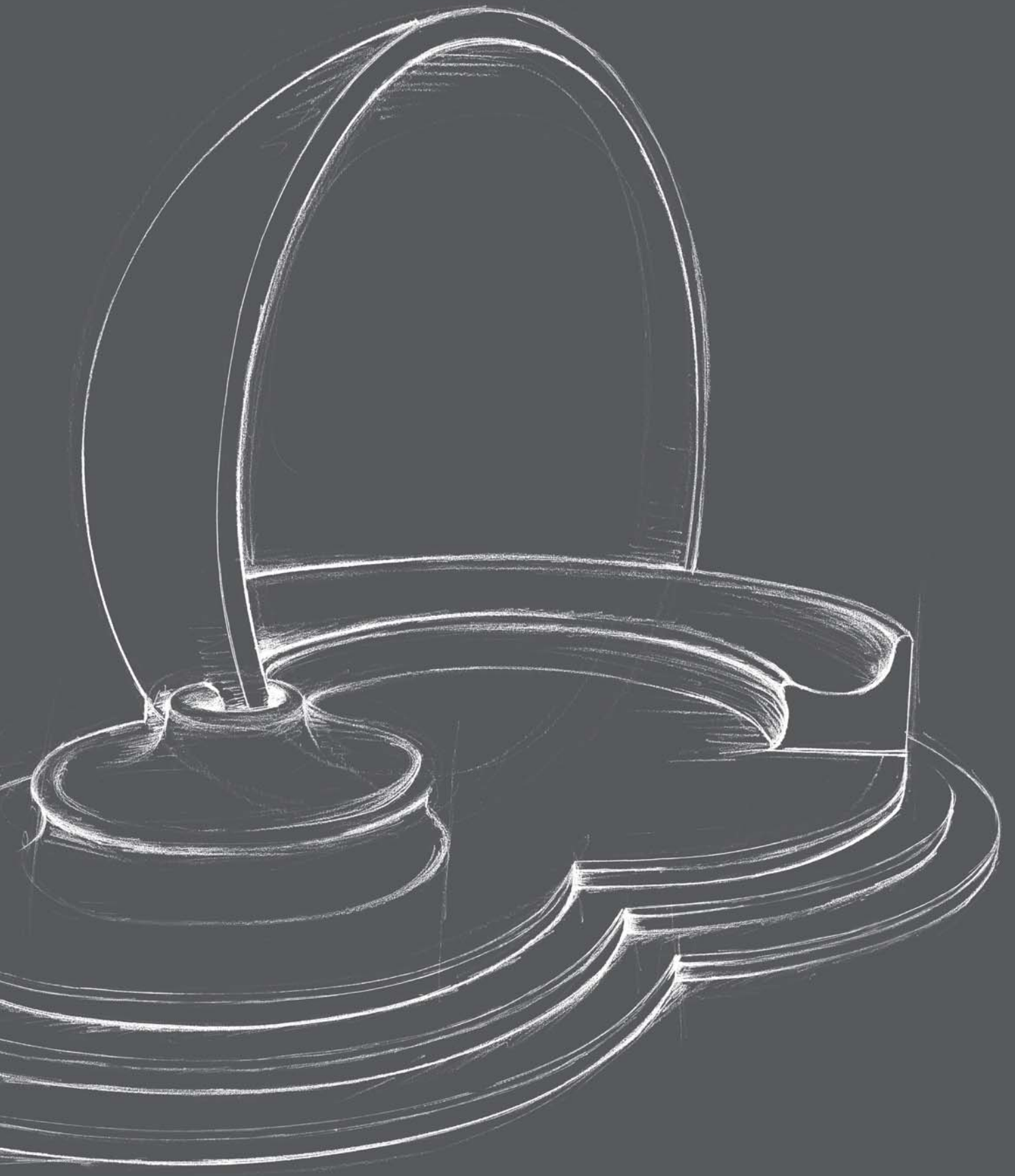
Wellness by wedi: Prefabricated elements and custom builds

For the creation of unique bath and wellness facilities, wedi offers their customers different products and services depending on their needs and applications.

Firstly, this offer consists of a selected range of pre-fabricated elements. Whether it's simply for benches, expandable corner structures or elegant bath furniture, such as sinks or heated loungers – the different elements can be individually tiled and therefore perfectly integrated into any room concept.

In addition, wedi provides an individual service area for spa and wellness projects so that they can ensure that the rising design requirements of system operators are met. Here, the wedi project team supports architects, planners and system builders who have expertise in the areas of conception and planning, develops and designs the desired wellness objects, equips said objects with the necessary connections and suitable technology upon request and then installs them at the building site.

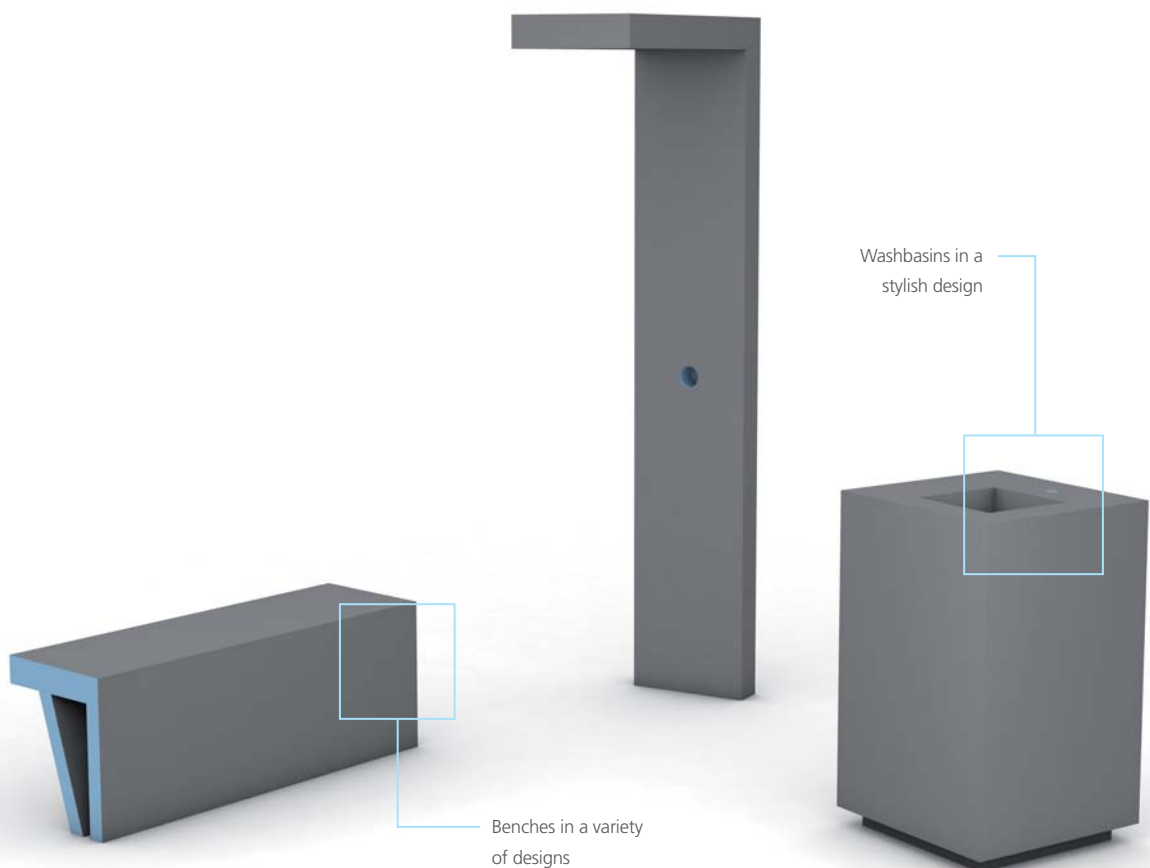




Prefabricated elements

Large selection of prefabricated design elements

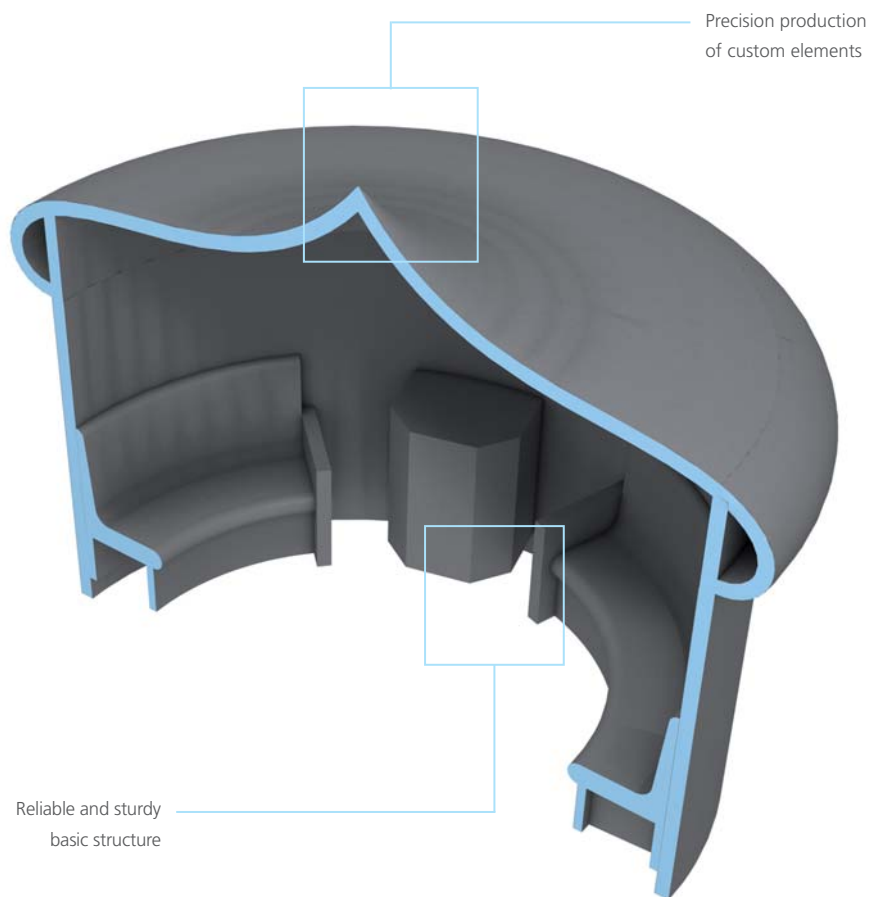
wedi offers a multitude of prefabricated design elements such as comfortable benches and loungers, practical wall solutions and elegant bathroom components such as shower cubicles and washbasins. Thanks to the individual tileability, there are no limits on the design.



Custom builds

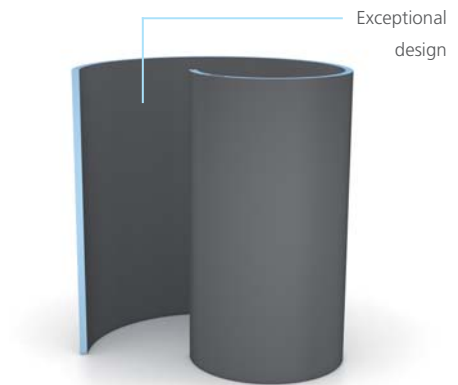
Unlimited possibilities for individual structures

Whether in a private bathroom or public facility – wedi offers a wide range of options for creating individual wet room structures. From simple seating and lounge areas through functional communal showers to custom-made steam baths with integrated technology and free-form design elements, almost every detail can be produced precisely to the specifications thanks to the versatile wedi base materials.



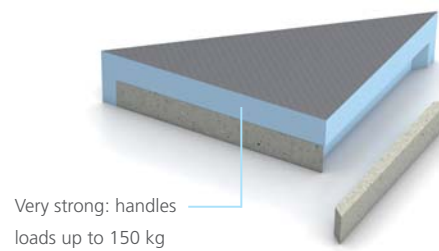
Fundo design showers

The extravagant wall elements in round or spiral shapes are perfect for free-standing showers in spacious rooms. They are perfect for combining with the appropriate floor elements and are optionally available with or without supply channels.



wedi Sanoasa corner seat element

The corner seat is a free-standing seat element and, thanks to its triangular, compact shape, is perfect for use in small showers. Installation can be done both on the raw surface as well as later on the finished tiling.



wedi Sanoasa loungers

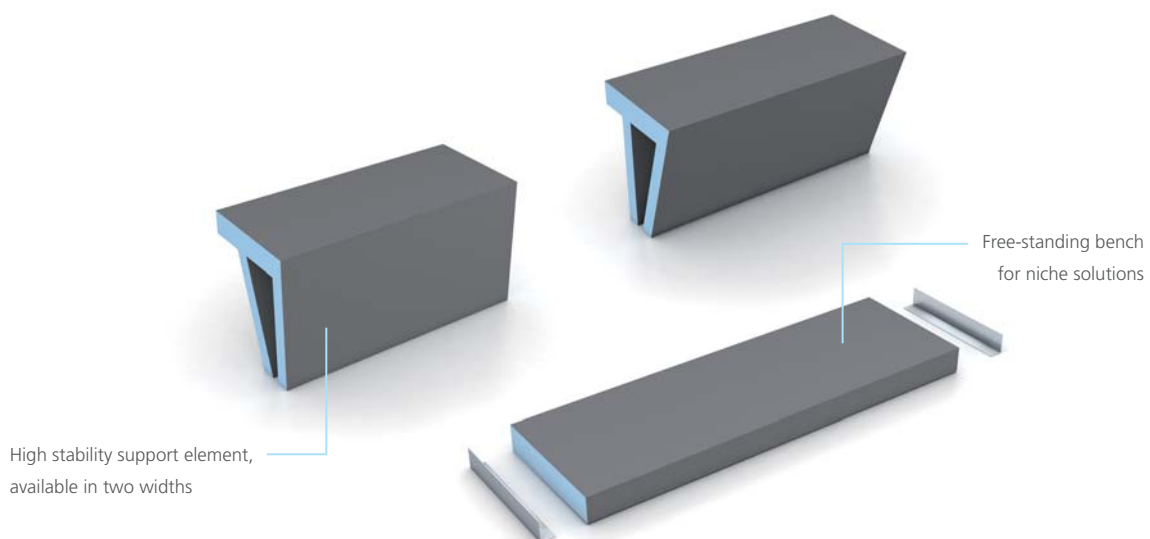
The wedi Sanoasa loungers particularly stand out due to their distinctive and unique shapes. They are available in five different designs and can be tiled or plastered as desired.





wedi Sanoasa benches

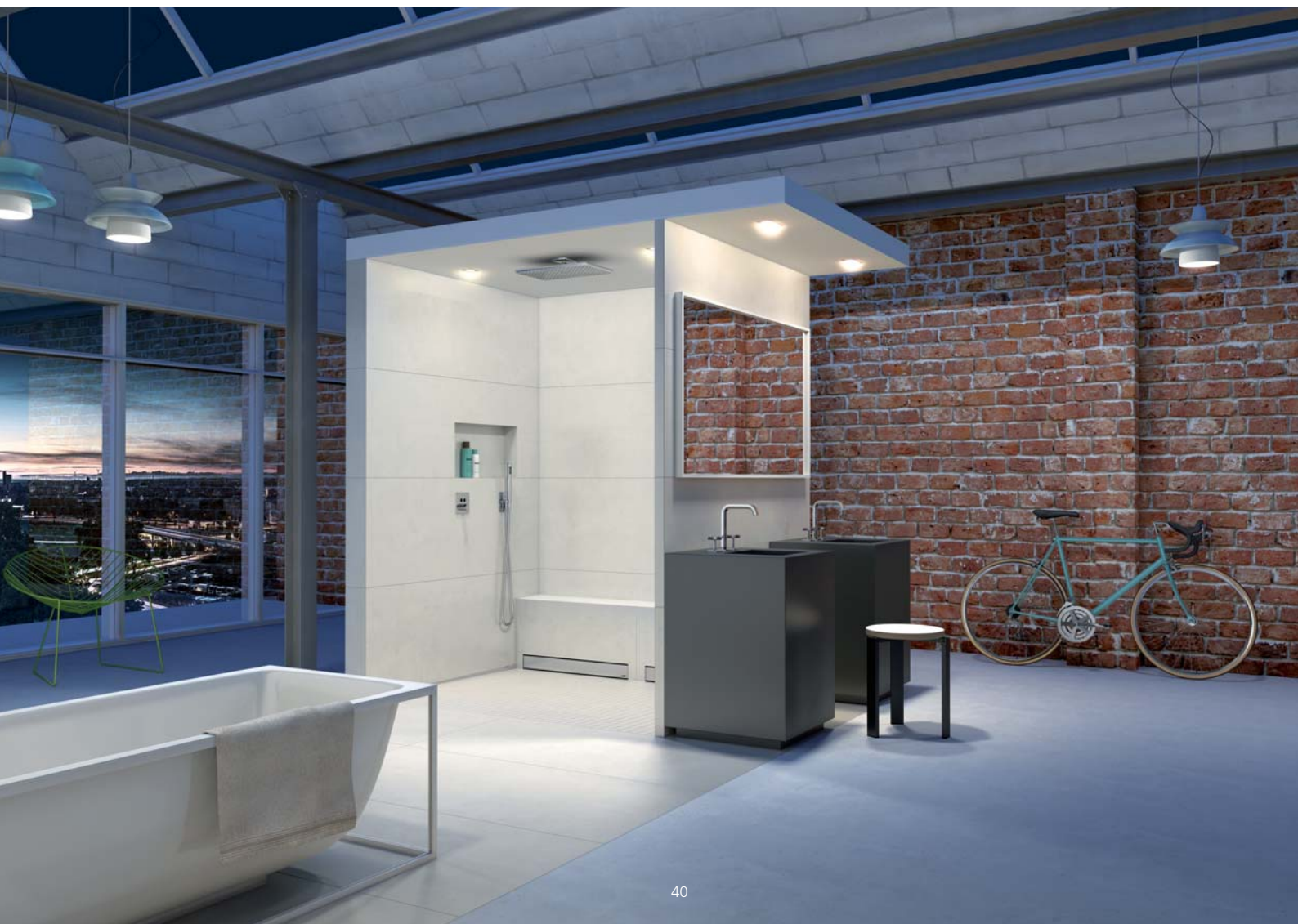
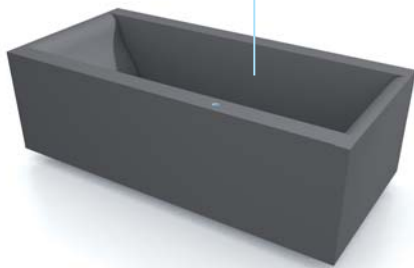
The wedi Sanoasa benches offer plenty of space for relaxation and for comfortable personal care. With a straight, bevelled or rounded seat edge and a variety of widths or as a completely free-standing seat, the right variant is available for every taste and purpose.



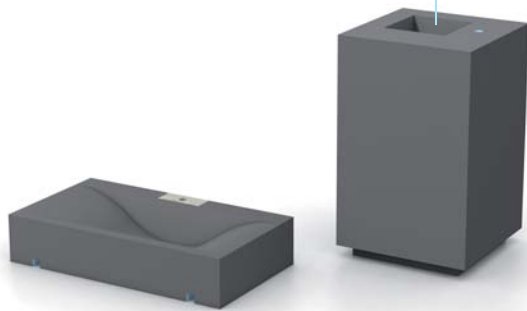
wedi Sanbath bathtubs

The wedi Sanbath bathtubs in the Cube and Wave ranges stand out with their purist design, are delivered ready for installation and can be tiled with the desired finishing covering directly after positioning and connection.

Delivered ready
for installation



Prepared for the installation
of fittings and siphon



wedi Sanbath washbasins

The cubic Sanbath Cube and Wave washbasins can be tiled to match the respective bath. They already have all of the necessary recesses for fittings from the factory and can therefore be installed easily, quickly and safely.

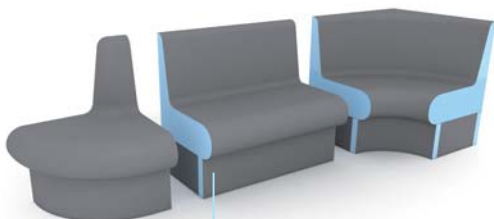
Curved
or straight



wedi Sanbath shower cubicles

The creative shape of the Sanbath shower cubicles in combination with the high scope for individualisation in the tiling make every shower area unique.

Modularly
combinable

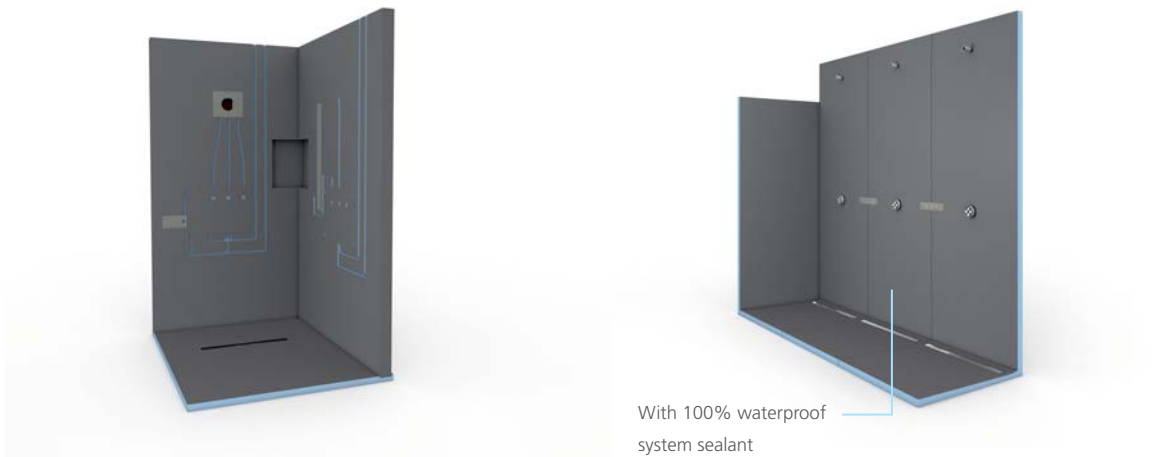


wedi Sanoasa bench elements

The Sanoasa benches in the Comoda and Bellina ranges are available in so many different versions that they enable the construction of almost any seat combination. Whether it's straight benches, corner structures or neat end solutions, they provide accents in all bathrooms and wellness facilities after individual tiling.

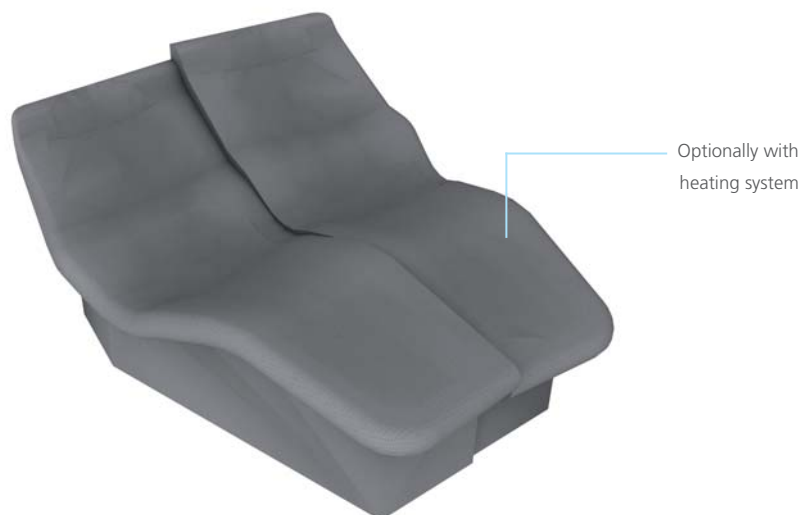
Cubicle and communal showers

For the creation of cubicle and communal showers, wedi offers a multitude of floor elements and appropriate wall structures. While communal showers consist of standard products or custom-made products, cubicle showers are manufactured individually for the actual intended use and can be equipped with a wide range of additional elements – 100 % waterproof with easy bonding and no additional sealing.



Seating and lounge areas

Elegant benches and loungers are part of the wedi standard range, but can also be individually designed and finished as desired. Upon request, for example, hot water or electrical heating systems can be integrated in the factory.

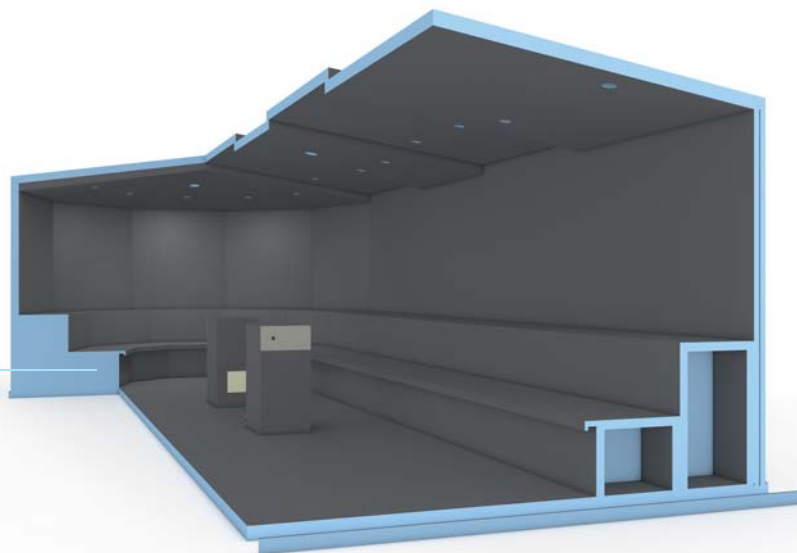




Individual steam baths

wedi offers countless options for designing a steam room. From the choice of the cabin geometry through the surface design to the technical equipment, every detail can be planned.

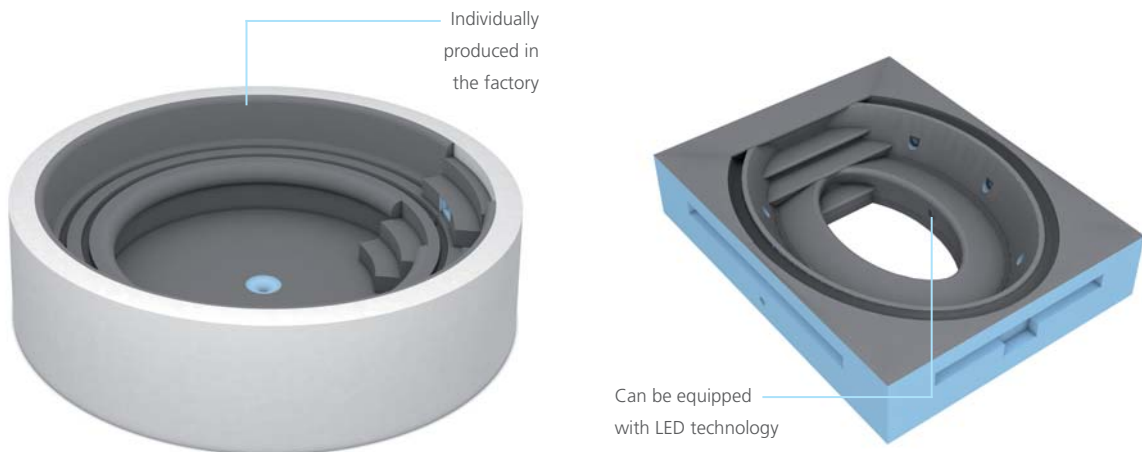
Equipment can be
freely chosen





Pool & underwater structures

Swimming pools, jacuzzis and underwater elements such as steps and benches can be realised precisely according to the desired ideas and specifications and equipped in the factory with recesses and ducts, e.g. for on-site massage jets or lighting technology.



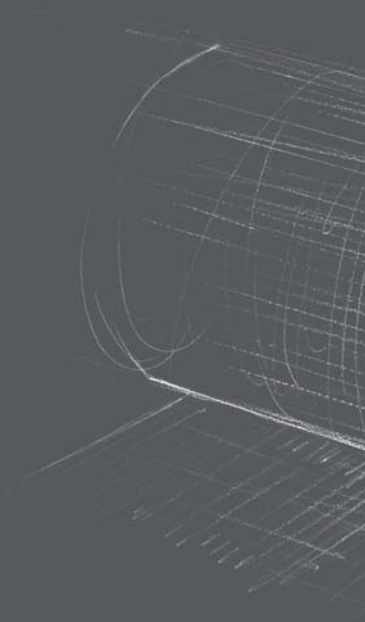
Free-form elements

With wedi, all types of creative idea can be turned into reality in the form of individually planned free-form elements. The precise custom-made products can optionally be equipped with integrated technology.



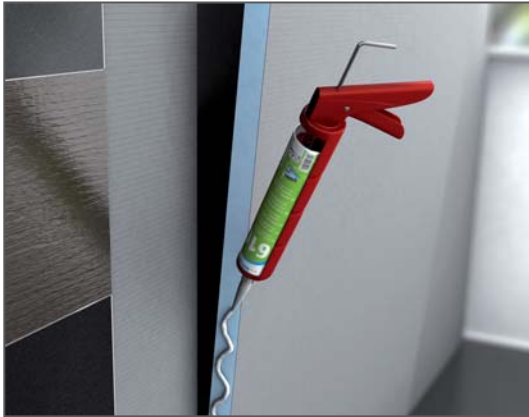
System connectors: Little helpers, big effect

wedi offers a wide selection of additional installation material and high-performance sealing solutions. Thanks to the modular construction of the perfectly compatible and combinable product range, wedi system solutions are especially easy and quick to install. For the complete bathroom from one place, 100 % water-tight and consistently reliable.



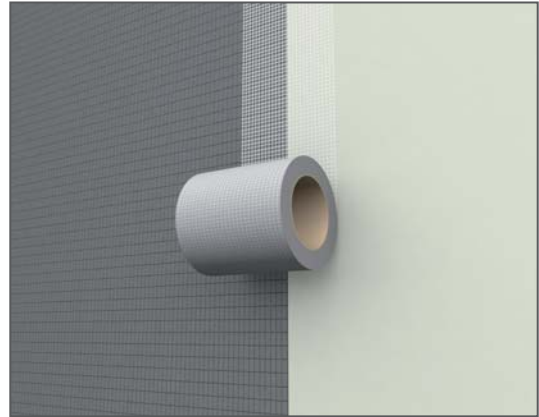


Use cases



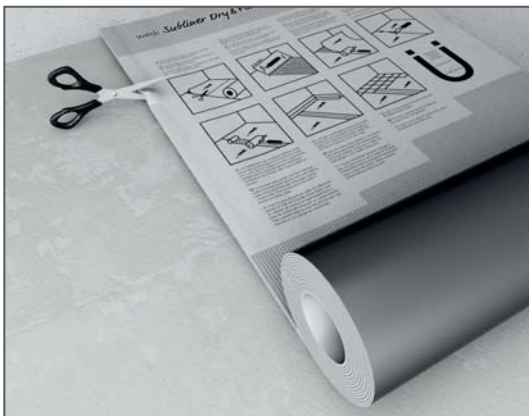
Bonding and sealing

The wedi building boards can be bonded securely and with 100 % waterproofing using the appropriate system chemistry, for example wedi 610 adhesive sealant, without any other sealing measures.



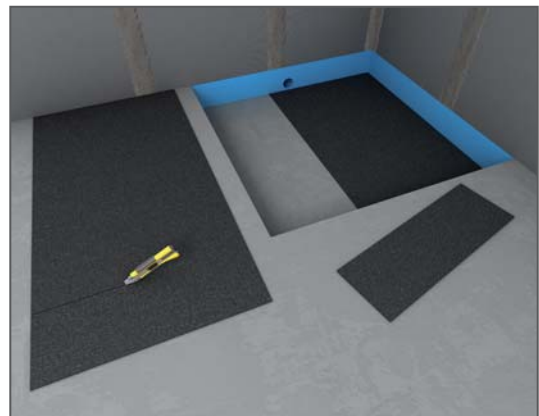
Fixing and mounting

The edge joints of the wedi building boards can be fixed with the self-adhesive wedi Tools joint reinforcement tape.



Decoupling

wedi offers a variety of crack-bridging sealing and decoupling membranes which can easily be cut to size with cutters and scissors.



Sound insulation

Floor-level showers from wedi can be perfectly protected against water noise or footfall noise with the appropriate wedi sound insulation mats.



wedi 610 adhesive sealant

As a versatile one-component adhesive sealant, wedi 610 is ideal for the simple, secure and waterproof joint connections between wedi components in just one easy step. The combination of wedi building boards and wedi 610 has a general building authority test certificate for highly stressed areas.



wedi 520 sealant

The flexible and 2-component wedi 520 sealant is suitable for indoor and outdoor applications. It can bridge cracks and guarantees high security for cracks appearing subsequently in the surface. Ideal for sealing the sealing details in all wedi sealing systems.



wedi 320 tile adhesive

The universal wedi 320 thin-bed mortar based on a hydraulic binding agent is ideal for fixing and laying wedi building boards as well as wall and floor tiles in interior as well as external areas.



wedi 360 flexible middle bed mortar

Highly polymer-modified, hydraulic and quick-drying middle bed mortar for wedi building boards as well as wall and floor coverings. The mortar bed thickness is between 5 and 20 mm.

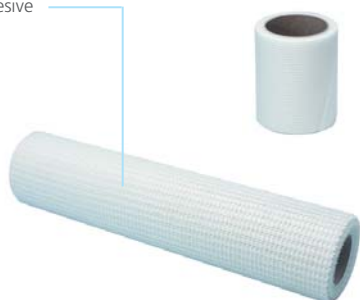




wedi Tools reinforcement tape

The optionally self-adhesive wedi Tools reinforcement tape is particularly suitable for fixing or bridging of building board joint edges.

Self-adhesive
version
available



wedi Tools sealing tape and sealing corners

wedi Tools sealing tape and sealing corners are suitable for the secure sealing of corner, connecting and butt joints and intersections. They are made from TPE coated with polypropylene fleece and have very good adhesion properties.

For corner,
connecting and
butt joints





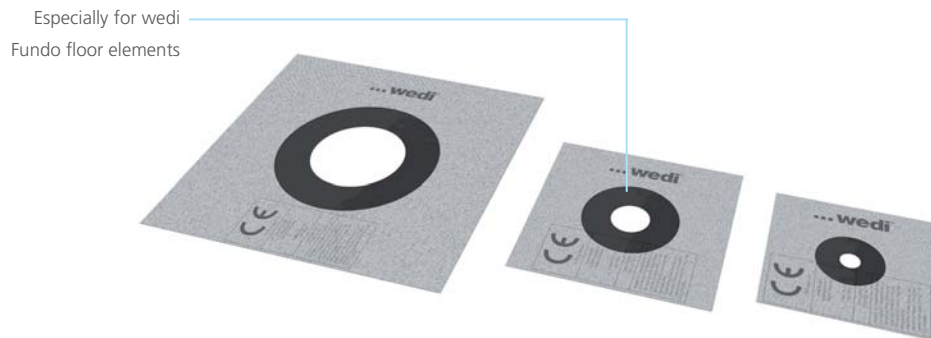
wedi Fundo sealing set

The wedi Fundo sealing set consists of the products wedi 520 sealant, wedi tools sealing tape and wedi tools sealing corners and is especially suited to waterproof connection of Fundo floor elements to other materials outside of the system, such as e.g. floor screed or plasterboard.



wedi Tools sealing gaiters

The flexible and fleece laminated wedi sealing gaiters are suitable for the sealing of all pipes under ceramic flooring in shower and wet rooms. Available in nominal diameters of DN 15 – 35, DN 40 – 75 and DN 90 – 125, they always offer a reliable sealing solution for different sizes of lead-throughs and a wide variety of applications.



wedi Tools tub sealing tape

The fleece laminated wedi Tools tub sealing tape consists of a TPE-coated polypropylene fleece equipped with butyl strips. It has good adhesion properties and is suitable for secure sealing of tubs and shower trays made from steel enamel, acrylic or similar materials. It is optionally available in a set with the self-adhesive decoupling strip which creates tension compensation between the tub and the adjoining wall.



wedi Subliner Dry & Flex

The flexible, crack-bridging wedi Subliner Dry & Flex sealing and decoupling membrane is made from a highly tear-resistant polyethylene film and is suitable for fast sealing for projects with fixed completion dates in conjunction with ceramic tiles and slabs, as well as with natural stone cladding for walls and floors in indoor and outdoor areas. The special membrane provides improved tension compensation when sudden temperature changes occur. It is tested and approved for areas of use up to W2-I.



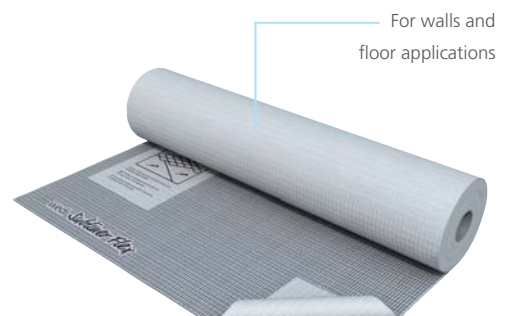
wedi Subliner Dry

wedi Subliner Dry is a thin-layered, crack-bridging sealing membrane made from highly tear-resistant polyethylene film which, thanks to its special layer of fleeced material on both sides, provides the optimum anchorage for tile-laying materials. Perfect for combining with the wedi system components, e.g. wedi Tools sealing tape and wedi 520. Tested and approved for areas of use up to W2-I.



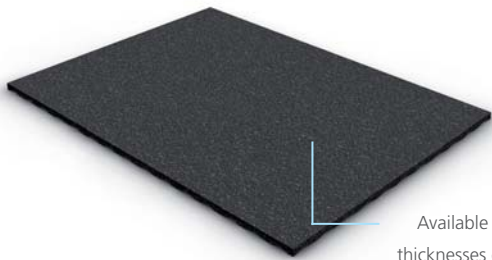
wedi Subliner Flex

The wedi Subliner Flex crack-bridging decoupling membrane for wall and floor surfaces in indoor areas is made from a robust reinforcement fabric with a special fleece layer on each side that ensures excellent adhesion of tile setting compounds.



wedi Nonstep Pro

wedi Nonstep Pro is the ideal product for efficient impact sound insulation and water crashing noises. It doesn't just fulfil the minimum requirements, but the modular wedi system has been tested for adherence to the increased noise-protection requirements, and passed.



Available in thicknesses of 8 and 17 mm

wedi edge insulation strip

The wedi edge insulation strip prevents the transfer of noise between the Fundo floor element and the adjacent area (wall, floor screed, etc.) and is consequently an indispensable complement to the wedi Nonstep Pro sound-insulation mat.

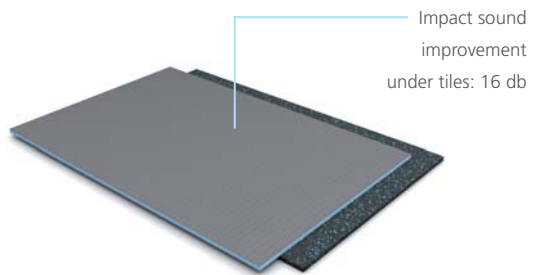


Length: 25 m



wedi Nonstep Plus

The wedi Nonstep Plus sound insulation composite board consists of a 6 mm wedi building board bonded in the factory to a 5 mm rubber mat, creating an overlap. It is used for decoupling under ceramic flooring, laminate or ready-to-lay parquet.



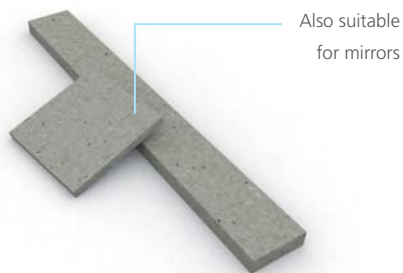
wedi Nonstep Plan

wedi Nonstep Plan impact sound insulation is a thin-layered rubber granulate mat with a flexible, mineral coating which is used for decoupling under ceramic floor coverings, laminate or ready-to-lay parquet.



wedi Tools fixings set

The wedi Tools fixings set allows you to screw on heavy items such as fittings or glass doors easily and safely.



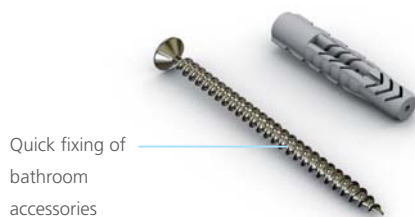
wedi Tools metal dowels & washer

The wedi Tools metal dowels and insulation board washers are suitable for the permanent mounting of the building board system on a wide range of surfaces. Here, the insulation board washers prevent the screws from being driven into the XPS foam.



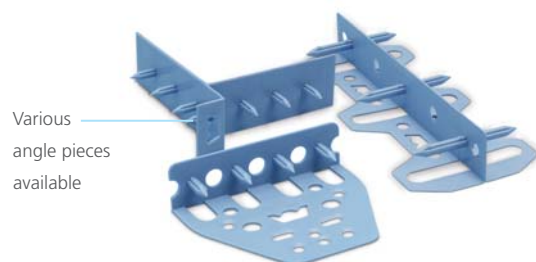
wedi Tools cavity dowels set

Bathroom accessories such as mirrors, soap dispensers or towel rails can be installed quickly and easily using the cavity dowel set.



wedi Tools connector

The stabilising wedi Tools connectors are suitable for the initial connection of the wedi building board systems.



System examples: Products become systems

Thanks to their modular construction, the various product and system solutions from wedi can be combined with one another any way you like. Depending on the room environment, entirely individual design ideas and structures can thus be realised. A floor-level shower element, for example, can be expanded into a functional and visually appealing shower area in combination with a bench and a free-standing partition wall. With the right wedi accessories, installation here is particularly easy, quick and up to 100% waterproof.

On the following pages, you can find several system examples which demonstrate how easily the shower solutions, wall and floor applications, or shelf and wash stand solutions, for example, can be realised with wedi.



Modern shower solution with free-standing partition wall and adjoining washbasin

The high individual stability of the wedi building boards as well as the simplicity of being able to cut them to the required dimensions enable the individual construction of creative wash stand and shower solutions. The Fundo Plano Linea is also integrated in this example system. With its factory-integrated drain technology, the system measures just 70 mm.

Products used

- 1 [wedi Tools sealing gaiter](#) ▪ flexible sealing for pipes and fittings
- 2 [wedi building boards](#) ▪ for the exacting design of wash stand solutions
- 3 [wedi Tools reinforcement tape](#) ▪ for reinforcing joints
- 4 [wedi 610](#) ▪ adhesive and sealant for the watertight adhesion of joints
- 5 [wedi 320](#) ▪ for full-surface bonding of the Fundo elements and building boards to the surface
- 6 [Masonry](#)
- 7 [Fundo Plano Linea](#) ▪ shower element with integrated drainage technology (linear drainage)
- 8 [Fundo Plano Linea sealing pads](#) ▪ for sealing the filled gap for the pipe connection
- 9 [wedi Fundo sealing set](#) ▪ for sealing of the perimeter of Fundo floor elements when connecting to adjacent surfaces
- 10 [Bonded fill or earth-moist mortar](#)
- 11 [wedi edge insulation strips](#) ▪ sound insulation for the area between wedi Fundo floor elements and the wall
- 12 [PE-film](#) ▪ standard construction foil as a protective layer between the sound insulation mat and mortar
- 13 [wedi Nonstep Pro](#) ▪ sound insulation mats for water noise insulation under wedi Fundo floor elements



Practical shower solution with integrated drain technology

Thanks to the pre-fabricated drain, the entire system is a mere 65 mm. This wedi solution is absolutely unbeatable in renovation work, such as old building renovations, where every millimetre counts.

Products used

- 1 **wedi building boards** ▪ for constructing shower screens
- 2 **wedi 320** ▪ for full-surface bonding of the Fundo elements and building boards to the surface
- 3 **Masonry**
- 4 **wedi Tools sealing gaiter** ▪ flexible sealing for pipes and fittings
- 5 **wedi 610** ▪ adhesive and sealant for the watertight adhesion of joints
- 6 **Fundo Plano** ▪ extremely flat flush to floor shower element with integrated drain technology (point drainage)
- 7 **Fundo Plano sealing pads** ▪ for sealing the filled gap for the pipe connection
- 8 **Bonded fill or earth-moist mortar**
- 9 **wedi Tools reinforcement tape** ▪ for reinforcing joints
- 10 **wedi Fundo sealing set** ▪ for sealing of the perimeter of Fundo floor elements when connecting to adjacent surfaces
- 11 **wedi edge insulation strips** ▪ sound insulation for the area between wedi Fundo floor elements and the wall
- 12 **PE-film** ▪ standard construction foil as a protective layer between the sound insulation mat and mortar
- 13 **wedi Nonstep Pro** ▪ sound insulation mats for water noise insulation under wedi Fundo floor elements



Construction height of just 65 mm including the drainage technology

Comfortable shower structure with bench and integrated attractive wall drain

This example shows the variety of the modular wedi systems very clearly. The floor level shower element with integrated slope board, the visual wall drain under the bench, the wall cladding and the free standing, stable partition wall are combined in one system. In this case, the wedi Mini Max drain version requires an installation depth of only 99 mm, including the thickness of the shower element.

Products used

- 1 [wedi building boards](#) ▪ as free-standing partition wall and for the cladding of wall surfaces
- 2 [wedi 320](#) ▪ for full-surface bonding of the Fundo elements and building boards to the surface
- 3 [Masonry](#)
- 4 [wedi Sanoasa bench 3](#) ▪ bench, rounded
- 5 [Fundo Discreto](#) ▪ the visual wall drain, in this case, integrated in the carrier element of the bench
- 6 [Fundo Riolito](#) ▪ the shower element with linear drainage
- 7 [wedi 610](#) ▪ adhesive and sealant for the watertight adhesion of joints
- 8 [wedi Tools reinforcement tape](#) ▪ for reinforcing joints
- 9 [wedi Fundo sealing set](#) ▪ for sealing of the perimeter of Fundo floor elements when connecting to adjacent surfaces
- 10 [wedi Fundo channel drain](#) ▪ in this case with a horizontal drain, Mini Max DN 40
- 11 [wedi edge insulation strips](#) ▪ sound insulation for the area between wedi Fundo floor elements and the wall
- 12 [Screed](#)
- 13 [PE-film](#) ▪ standard construction foil as a protective layer between the sound insulation mat and mortar
- 14 [wedi Nonstep Pro](#) ▪ sound insulation mats for water noise insulation under wedi Fundo floor elements



Functional shower niche with practical seating and shelf spaces and adjoining bathtub

The focus is also on modularity with this shower solution. The wall structures made from wedi building boards with integrated niches form the framework for the shower with point drainage and free-standing bench. The outer adjoining bathtub completes the bathroom.

Products used

- 1 [wedi building boards](#) ▪ for cladding wall and floor surfaces and for creating niche solutions
- 2 [wedi Sanwell Niches](#) ▪ for the creation of additional tray elements in the shower and bath
- 3 [wedi Tools sealing gaiter](#) ▪ flexible sealing for pipes and fittings
- 4 [wedi Sanoasa bench 4](#) ▪ bench, straight
- 5 [wedi Tools tub sealing tape](#) ▪ for reliable sealing of bathtubs and shower trays
- 6 [wedi 320](#) ▪ for full-surface bonding of tiles and the Fundo elements to the surface
- 7 [Fundo Primo](#) ▪ shower element, in this case with offset point drainage
- 8 [Screed](#)
- 9 [wedi edge insulation strips](#) ▪ sound insulation for the area between wedi Fundo floor elements and the wall
- 10 [PE-film](#) ▪ standard construction foil as a protective layer between the sound insulation mat and mortar
- 11 [wedi Nonstep Pro](#) ▪ sound insulation mats for water noise insulation under wedi Fundo floor elements





- Australia
- Austria
- Belgium
- Bosnia Herzegovina
- Canada
- Croatia
- Czech Republic

- Denmark
- Estonia
- Finland
- France
- Germany
- Great Britain
- Greece

- Hungary
- Iceland
- Ireland
- Italy
- Latvia
- Lithuania
- Luxembourg

- Netherlands
- Norway
- Poland
- Portugal
- Romania
- Russia
- Serbia

- Slovenia
- Spain
- Sweden
- Switzerland
- Turkey
- Ukraine
- USA



wedi GmbH
 Hollefeldstraße 51
 48282 Emsdetten
 Germany

Telephone +49 2572 156-0
 Fax +49 2572 156-133

info@wedi.de
 www.wedi.eu

