

wedi Fundo Plano Linea

Actually impossible!

Actually ...





Extremely flat: a total installation height of just 70 mm



Complete system incl. integrated drain technology



Precisely specified slope



Line drainage especially close to the wall



Entire system is 100% water tight



Barrier-free and suitable for wheelchair loading





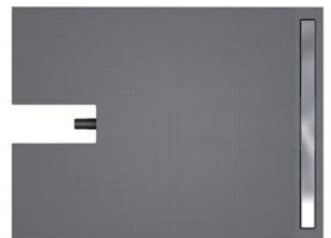
wedi Fundo *Plano Linea*

The thinnest complete linear system

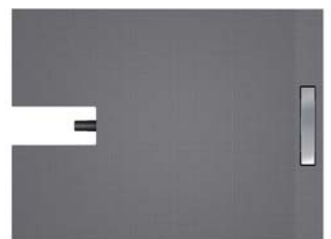
wedi's innovation of the year is – at the same time – the thinnest complete system for floor-level showers featuring linear drainage. With the drain technology, which was already integrated in the factory, the system measures a mere 70 mm and is a special wedi highlight in bathroom renovations. Positioned very close to the wall, and featuring a short or long channel as an option, the drain gives a high-quality impression from a visual perspective and also frees up additional space for pure shower enjoyment.

The Plano Linea naturally offers all the benefits of a tried-and-tested wedi system, from the guaranteed 100% water tightness to versatile and easy-to-implement use.

wedi Fundo Plano Linea – the highlight of the entire line!



wedi Fundo Plano Linea with a long channel

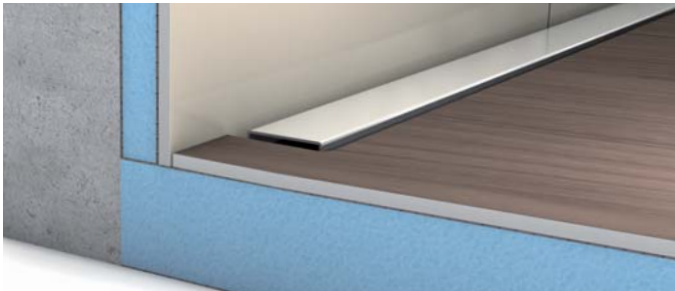


wedi Fundo Plano Linea with a short channel



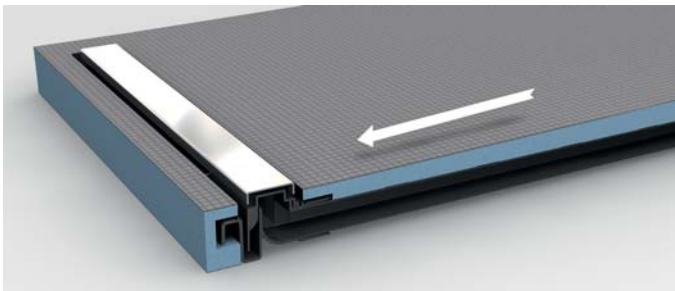
Extremely flat, ideal for renovations

Renovation made easy: Where other products fail, wedi Fundo Plano Linea with its extremely low overall height of just 70 mm including the drain delivers an impressive performance.



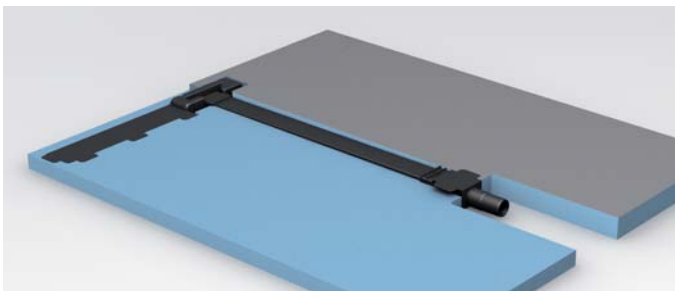
Drain especially close to the wall

The drain channel positioned very close to the wall not only ensures optimum water drainage, but also frees up more floor space in every shower.



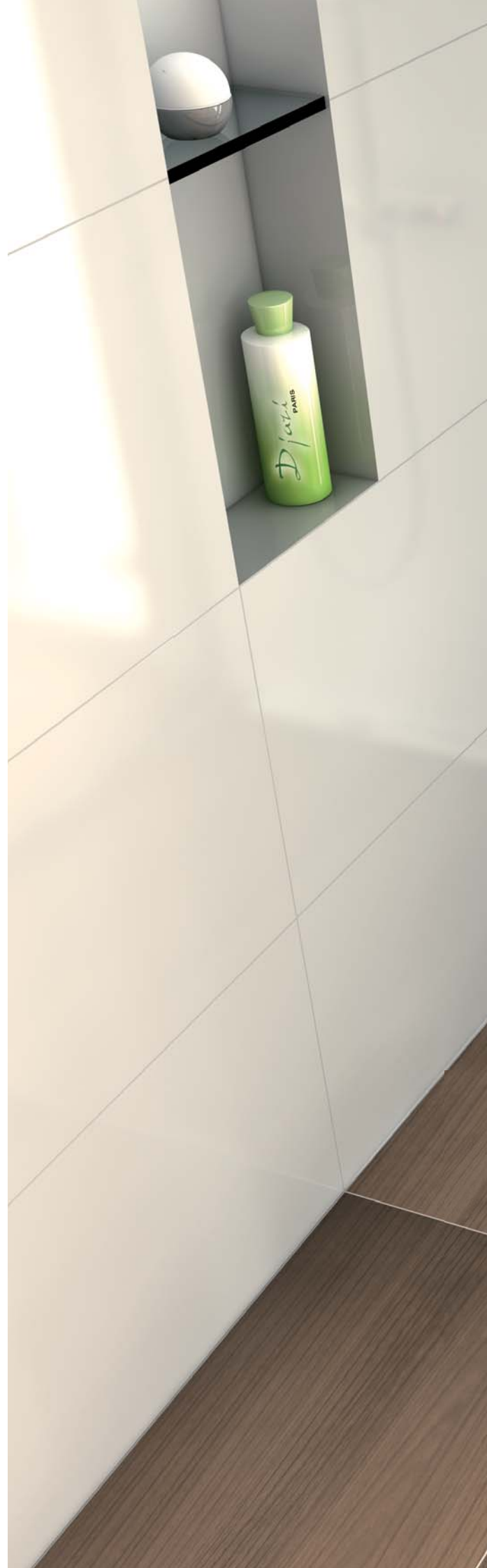
Precisely specified slope

The completely even slope ensures optimum tileability, guaranteeing surface drainage at all times.



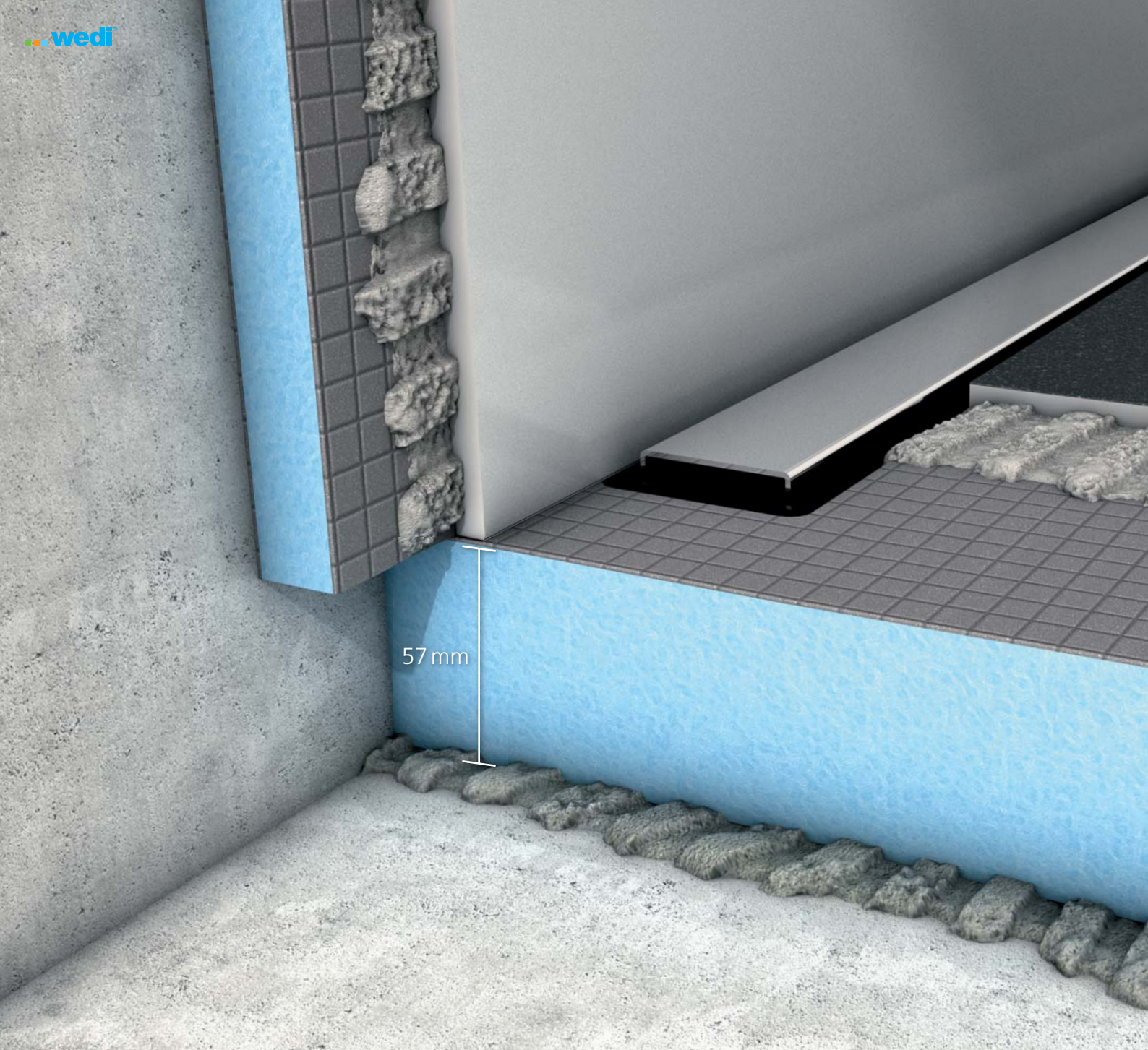
Complete with integrated drain technology

The complete system already includes permanently integrated drain technology, so you're guaranteed an especially high level of reliability during the installation process.

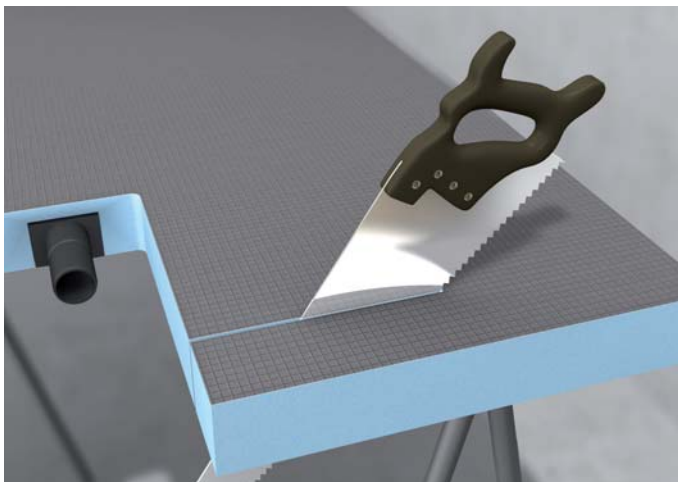




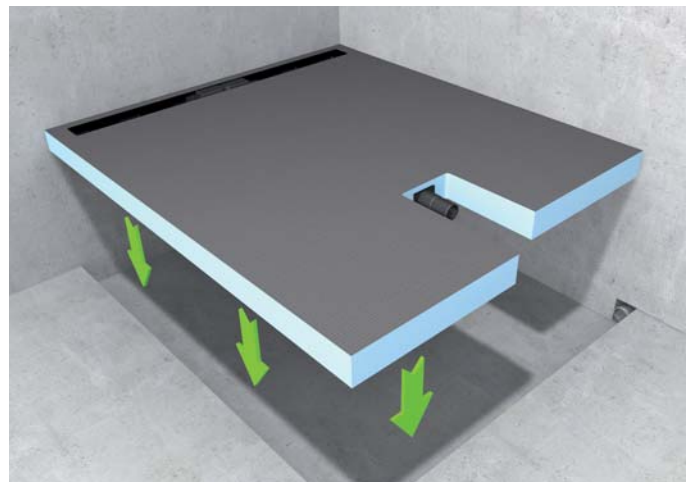
The **best** thing that could happen to your **shower**.



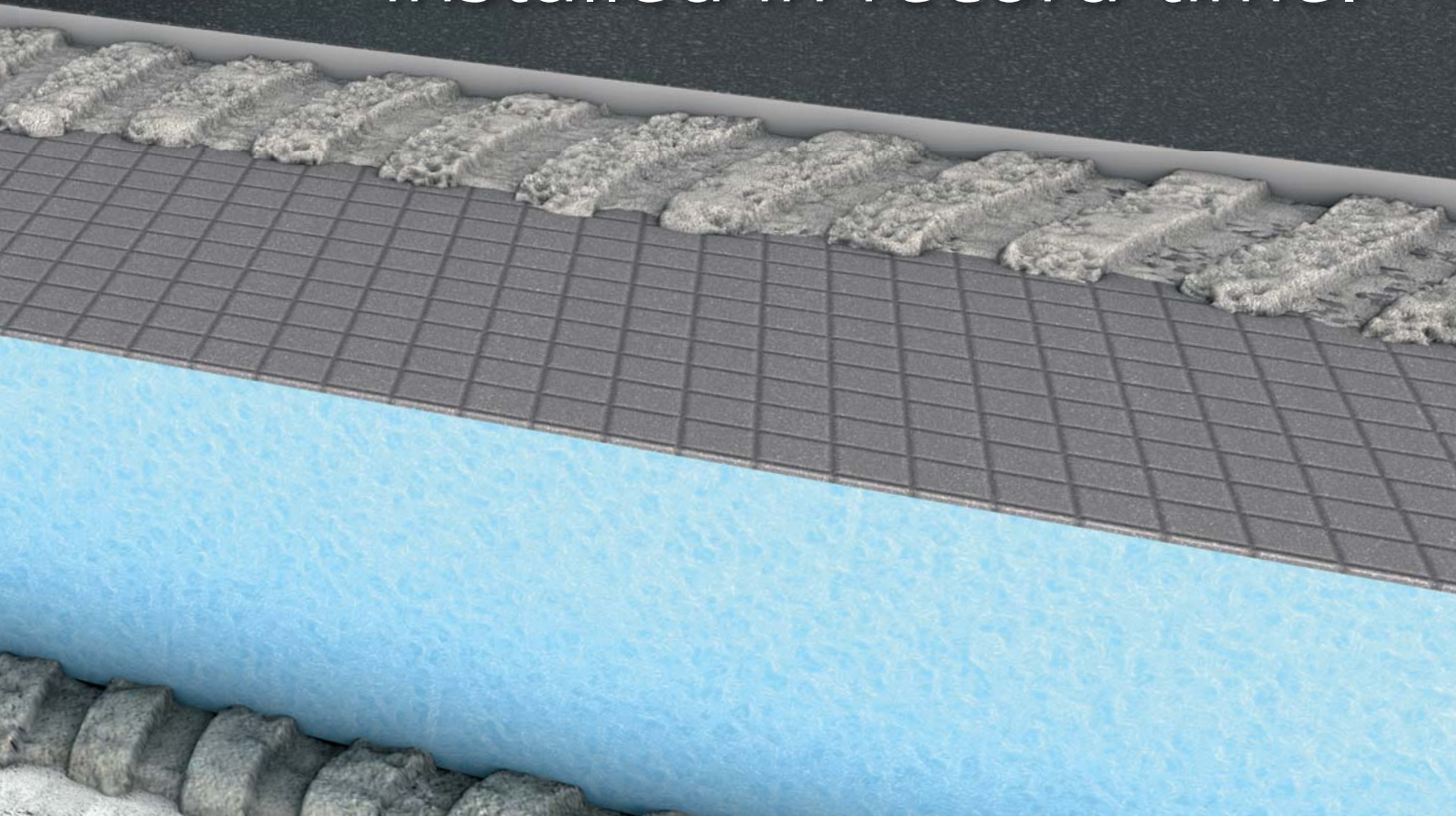
Simply **cut to size** ...



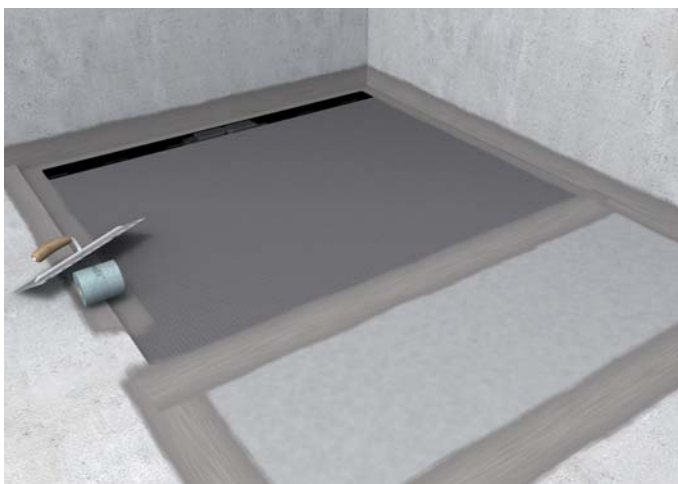
... **install** as a custom-fit element ...



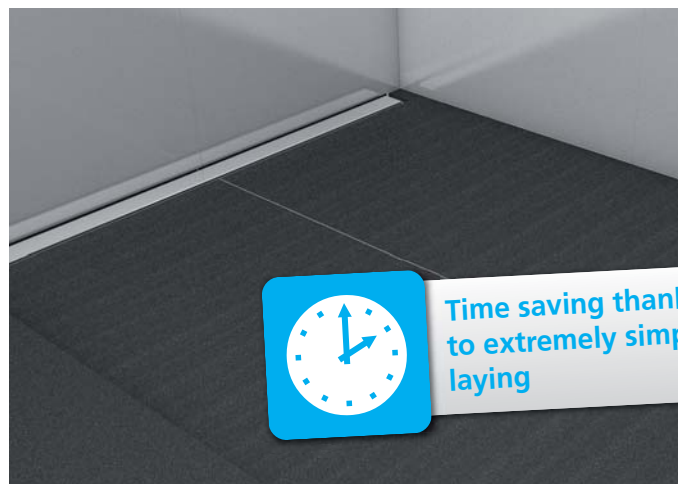
Lightweight and **compact** –
installed in record time.



... **seal** the transitions ...



... **tile** to suit your
individual requirements.



Time saving thanks
to extremely simple
laying



A good **combination?**
You **bet!**

e.g. expanded with a facing wall



e.g. expanded to include a bench solution

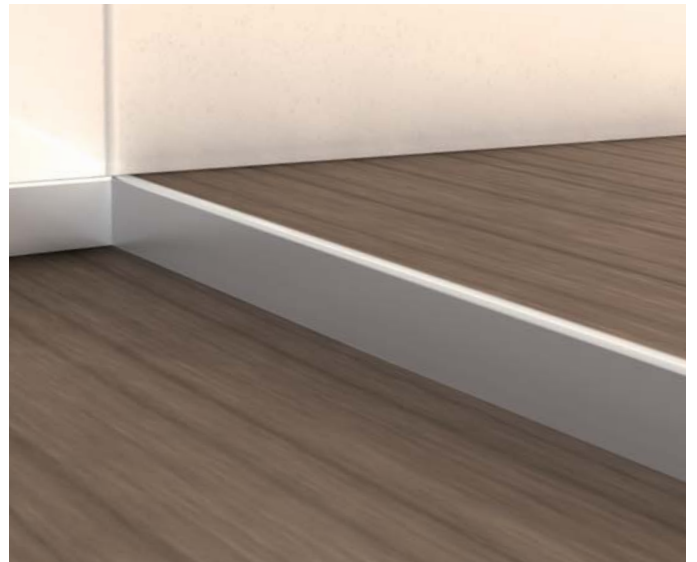
Can be combined with wedi Fundo *Riolito Discreto*

The reliable overall system always takes centre stage. With the optical Fundo Riolito Discreto wall drain, wedi's wall drainage solutions can vary to suit your heart's desire. The attachment element can be easily expanded in all directions by wedi building board.

Whether combined to include a sitting surface, designed as a shelf feature or installed as a complete facing wall – with these system components, the design ideas know no limits.



e.g. expanded with a shelf system



wedi Fundo *Plano Linea* wall slope profile

The special wall profile is designed in a wedge shape according to the slope and serves as the perfect transition between the floor and wall.



wedi Fundo *Plano Linea* floor slope profile

This wedge-shaped inflow slope profile that can be cut to size is used to create an aesthetic transition to the neighbouring tiled floor.

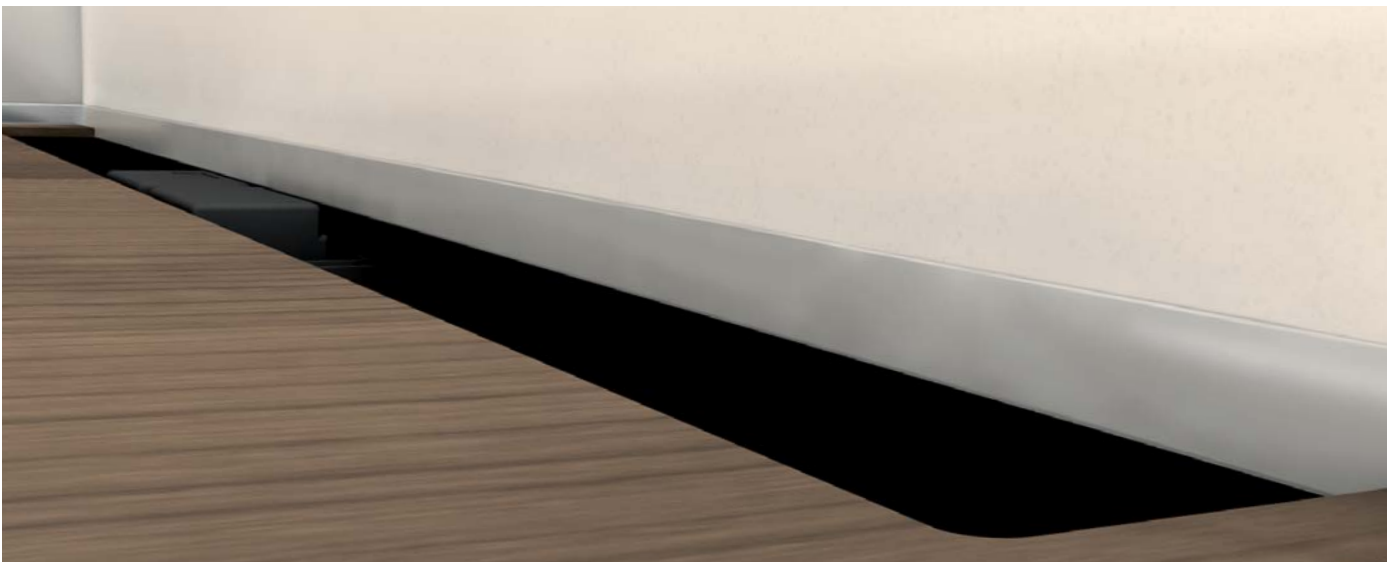




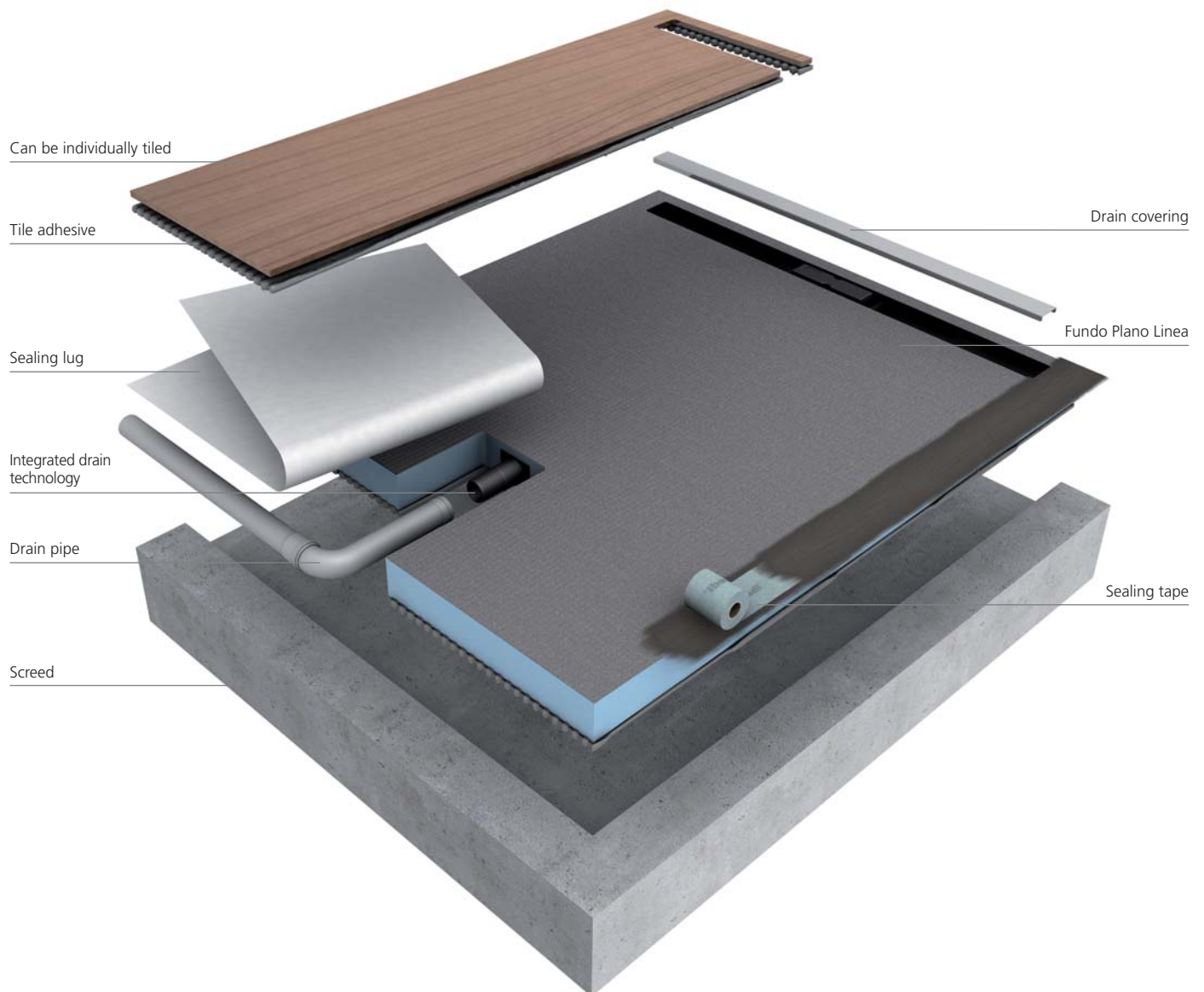
A first-class **connection**
on all **sides**.

wedi Fundo *Plano Linea* shut-off profile

The decorative shut-off profile creates a visually standardised connection.



Reliable. Systematic.



Technical data

Untreated foam

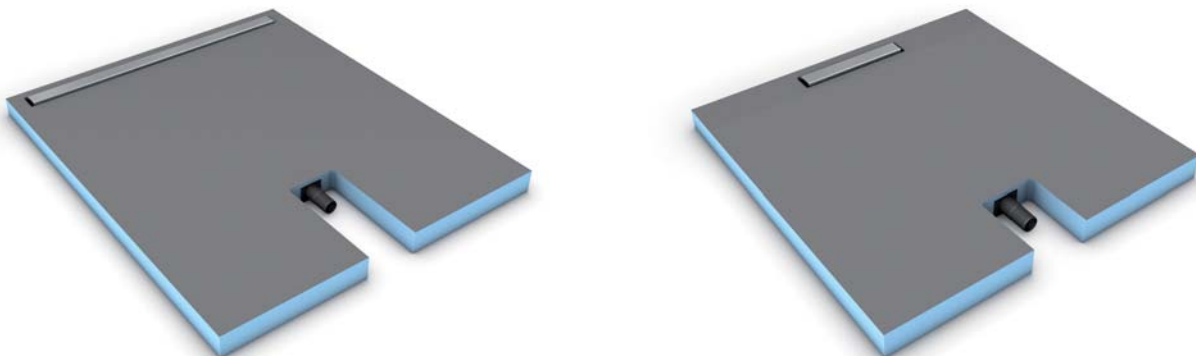
Extruded polystyrene rigid foam	XPS
Long-term compressive strength (50 years) at $\leq 2\%$ compressive strain in line with EN 1606	0.08 N/mm ²
Compressive stress / strength at 10% compressive strain in line with EN 826	0.25 N/mm ²
Thermal conductivity in line with EN 13164	0.036 W/mK
Bulk density in line with EN 1602	32 kg/m ³
Temperature limits	-50°C / +75°C
Fire behaviour in line with DIN 4102	B1
GWP value for carbon dioxide propellant	1

Fundo Plano Linea

Suitable for wheelchair loading from minimum tile size	50 x 50 mm
Total installation height incl. integrated drain technology	70 mm
Surface slope	$\geq 1.19\%$
Scope of height-adjustability of Stainless steel coverings	5–25 mm
Dimensions of steel coverings (depending on the channel length, L x W)	
Channel covering, 300 mm	288 x 44 mm
Channel covering, 700 mm	688 x 44 mm
Channel covering, 800 mm	788 x 44 mm
Channel covering, 900 mm	888 x 44 mm
Drain performance	0.40 l/s ; 24.0 l/min

i All Fundo Plano Linea floor elements feature a height-adjustable covering made from brushed stainless steel V₂A and a large sealing lug (1,000 x 450 mm) in the scope of supply. The horizontal drain DN 40 is permanently integrated in the floor element.

Drain variants



wedi Fundo *Plano Linea* with a long or short channel

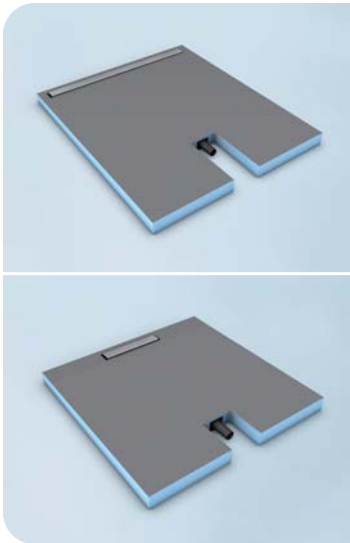
The new Fundo Plano Linea linear drainage not only comes in various shapes, but also features short or long channels – the choice is yours. No matter what design variant you opt for, you can completely rely on the unique benefits of this system – from the

flat total installation height of just 70 mm, and the integrated drain technology, to the fantastic drain performance of 24 litres per minute.

The wedi promise: innovation in perfection.

Item numbers and versions

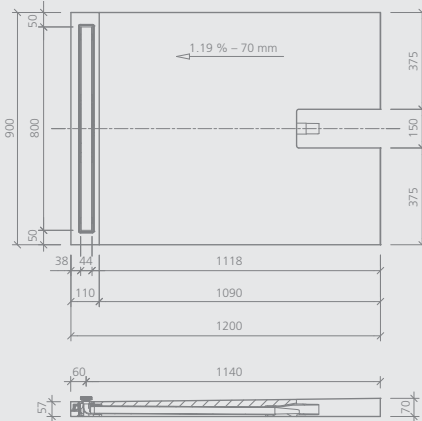
wedi Fundo Plano Linea



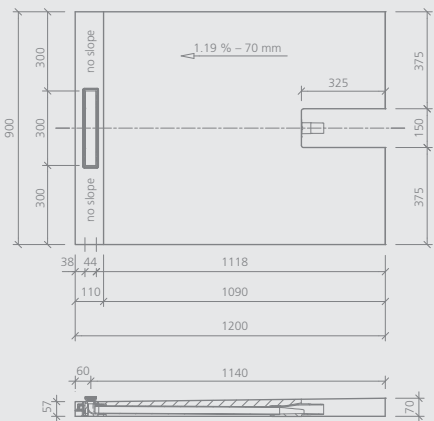
Name	Outer dimensions: L x W x H	Channel: L	Order no.
Floor element with channel drain, rectangular	1200 x 800 x 70 mm	700 mm ①	07-37-36/600
Floor element with channel drain, rectangular	1200 x 900 x 70 mm	800 mm ②	07-37-36/601
Floor element with channel drain, rectangular, with short channel	1200 x 900 x 70 mm	300 mm	07-37-36/607
Floor element with channel drain, rectangular	1200 x 1000 x 70 mm	900 mm ③	07-37-36/602
Floor element with channel drain, square	900 x 900 x 70 mm	800 mm ②	07-37-36/603
Floor element with channel drain, square, with short channel	900 x 900 x 70 mm	300 mm	07-37-36/608

- i** • The figures ①, ② and ③ indicate which variants can be suitably combined with Fundo Riolito Discreto.
 • All Fundo Plano Linea floor elements feature a covering made from brushed stainless steel V₂A and a sealing corner in the scope of supply. The horizontal drain DN 40 is permanently integrated in the floor element.

wedi Fundo Plano Linea



wedi Fundo Plano Linea with a short channel

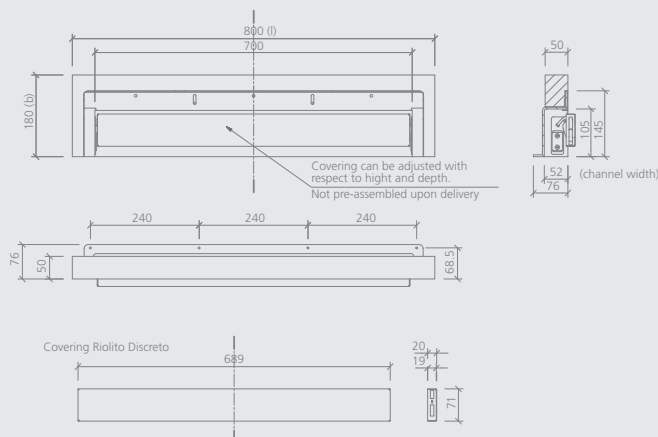


wedi Fundo Riolito Discreto



Name	Outer dimensions: L x W x H	Order no.
wedi Fundo Riolito Discreto, attachment element	800 x 180 x 76 mm ①	07-37-38/200
wedi Fundo Riolito Discreto, attachment element	900 x 180 x 76 mm ②	07-37-38/201
wedi Fundo Riolito Discreto, attachment element	1000 x 180 x 76 mm ③	07-37-38/202

- i** • The figures ①, ② and ③ indicate which variants can be suitably combined with Fundo Plano Linea.



wedi Fundo Plano Linea profiles



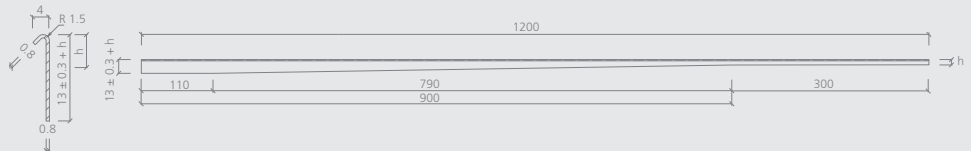
Name	Length	Height	Order no.
wedi Fundo Plano Linea, floor slope profile, left	1200 mm	8 mm	10-71-00/008
wedi Fundo Plano Linea, floor slope profile, left	1200 mm	10 mm	10-71-00/010
wedi Fundo Plano Linea, floor slope profile, left	1200 mm	12.5 mm	10-71-00/012
wedi Fundo Plano Linea, floor slope profile, right	1200 mm	8 mm	10-71-10/008
wedi Fundo Plano Linea, floor slope profile, right	1200 mm	10 mm	10-71-10/010
wedi Fundo Plano Linea, floor slope profile, right	1200 mm	12.5 mm	10-71-10/012
wedi Fundo Plano Linea, wall slope profile, left	1200 mm	8 mm	10-72-00/008
wedi Fundo Plano Linea, wall slope profile, left	1200 mm	10 mm	10-72-00/010
wedi Fundo Plano Linea, wall slope profile, left	1200 mm	12.5 mm	10-72-00/012
wedi Fundo Plano Linea, wall slope profile, right	1200 mm	8 mm	10-72-10/008
wedi Fundo Plano Linea, wall slope profile, right	1200 mm	10 mm	10-72-10/010
wedi Fundo Plano Linea, wall slope profile, right	1200 mm	12.5 mm	10-72-10/012
wedi Fundo Plano Linea, drain profile	1000 mm	21 mm	10-73-00/001

i • Perfectly coordinated to wedi Fundo Plano Linea floor elements

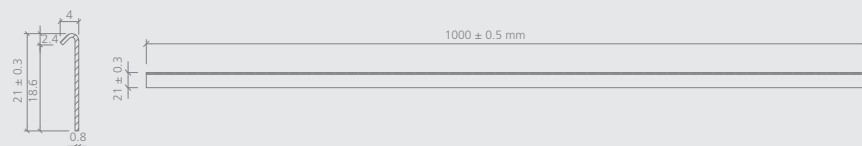
wedi Fundo Plano Linea, floor slope profile, right version







wedi Fundo Plano Linea, wall slope profile, left version







wedi Fundo Plano Linea, drain profile





-  wedi building board systems
-  wedi floor-level showers
-  wedi design elements
-  wedi sealing and decoupling

-  wedi wellness projects
-  wedi system chemistry
-  wedi practical auxiliaries
-  wedi support



wedi Systems (UK) Ltd
Suite 23 Evans Business Centre
Dane Street · Rochdale OL12 6XB
Telephone +44 1706 647 333
Telefax +44 1706 759 819
info@wedi.co.uk · www.wedi.co.uk

wedi GmbH
Hollefeldstraße 51 · 48282 Emsdetten · Germany
Telephone +49 2572 156-0 · Fax +49 2572 156-133
info@wedi.de · www.wedi.eu

